

Preliminary Cost Opinion
Public Safety Complex
Newberry County, South Carolina

Public Safety Complex 7,000 SF 4-Bay Fire Services Building, 7,000 SF 4-Bay Rescue Services, 6,000 SF Emergency Operations Building, Training Center, and CDL Training Facility					
No.	Quantity	Unit	Item Description	Unit Price	Total
1	1	LS	Mobilization/Bonds	\$ 275,000	\$ 275,000
2	1	LS	Traffic Control	\$ 6,000	\$ 6,000
3	4	AC	Site Stripping	\$ 3,500	\$ 14,000
4	1	LS	Demolition (Two (2) Existing Buildings and 600 Linear Feet of Fence)	\$ 100,000	\$ 100,000
5	1,600	LF	Silt Fence	\$ 4	\$ 6,400
6	1	EA	Construction Entrance	\$ 10,000	\$ 10,000
7	15,000	CY	Earthwork (Excavation / Backfill / Compaction)	\$ 4	\$ 60,000
8	7,900	SY	8-Inch Graded Aggregate Base Course (Concrete and Asphalt Areas)	\$ 18	\$ 142,200
9	7,000	SY	7-inch Concrete Paving with Metal Fibers	\$ 64	\$ 448,000
10	360	LF	18-Inch RCP Storm Drainage Piping (Roadway Culverts)	\$ 75	\$ 27,000
11	350	LF	24-Inch RCP Storm Drainage Piping (Site Drainage)	\$ 75	\$ 26,250
12	1,500	LF	30-Inch RCP Storm Drainage Piping (Outfall Piping)	\$ 100	\$ 150,000
13	8	EA	Storm Drainage Structures	\$ 7,500	\$ 60,000
14	2	EA	Flared End Sections	\$ 5,000	\$ 10,000
15	8	EA	Inlet Protection	\$ 750	\$ 6,000
16	1	EA	Skimmer and Outlet Structure	\$ 15,000	\$ 15,000
17	14,000	SF	Open Bay Buildings for Fire Services and Emergency Service (Pre-Engineered Metal Structure with Insulated Metal Panel Façade)	\$ 150	\$ 2,100,000
18	6,000	SF	Emergency Operations Services and Training Center	\$ 350	\$ 2,100,000
19	300	LF	6-foot Chain Link Fence	\$ 25	\$ 7,500
20	100	CY	Rip Rap (Outlet Protection)	\$ 50	\$ 5,000
21	50	CY	Rip Rap Forebay Berms (6-FT X 5-FT X 150-FT)	\$ 50	\$ 2,500
22	500	SY	Biodegradable Erosion Control Matting	\$ 4	\$ 2,000
23	1	LS	Striping & Signage	\$ 2,000	\$ 2,000
24	2	AC	Grassing	\$ 3,500	\$ 7,000
				Subtotal:	\$ 5,581,900
				Contingency:	\$ 1,121,600
				Topographic Survey:	\$ 5,000
				Lead and Asbestos Assessment:	\$ 5,000
				Design Level Geotechnical Subsurface Exploration:	\$ 10,000
				Architectural/Engineering Design and Permitting Services:	\$ 450,000
				Bidding and Award:	\$ 6,500
				Construction Administration and Observation:	\$ 335,000
				Construction Materials Testing:	\$ 225,000
				Record Drawings/Project Close-Out/Notice of Termination (NOT)	\$ 10,000
				Site Improvements Total:	\$ 7,750,000

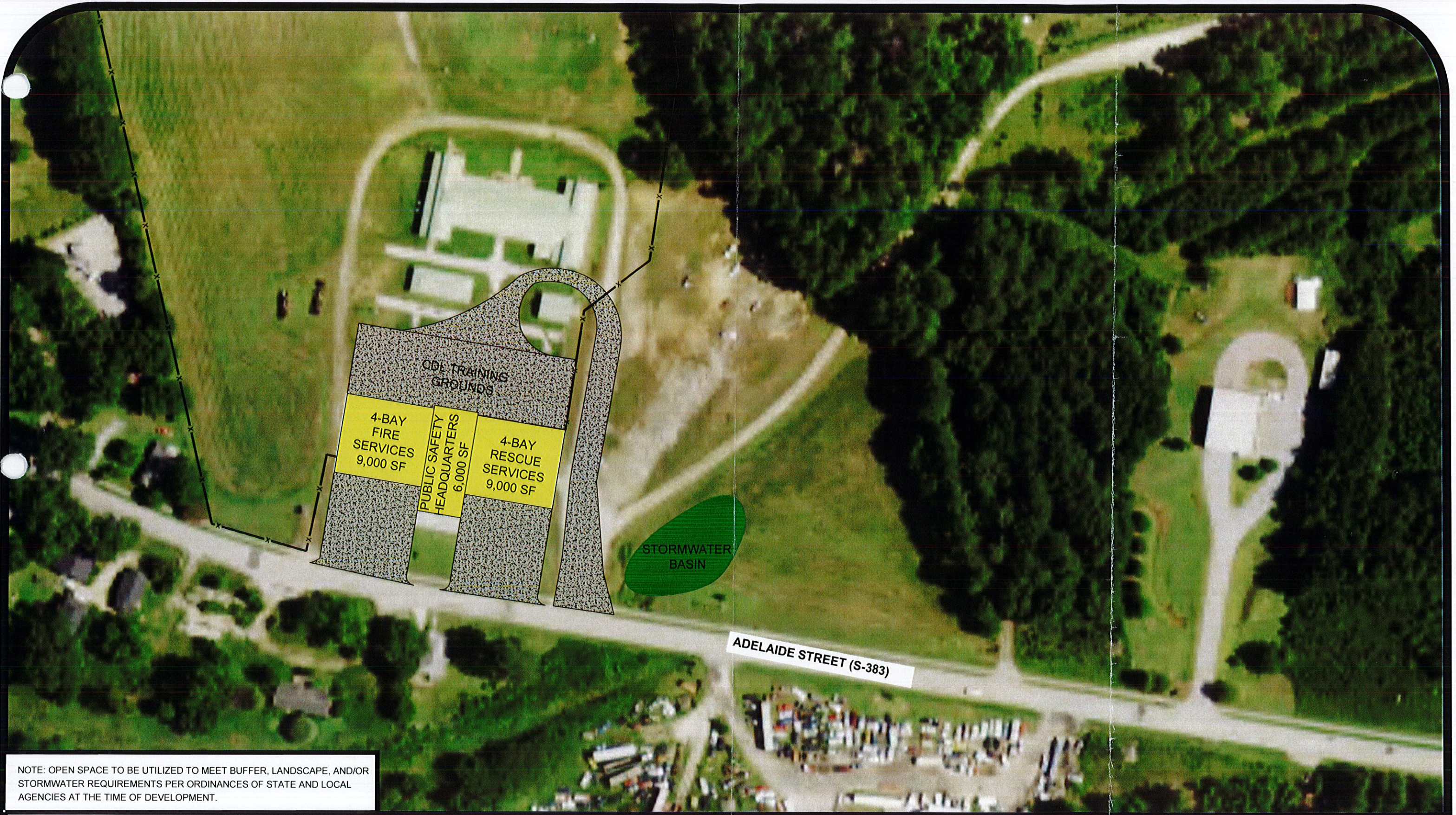
Notes:

- Alliance Consulting Engineers, Inc. does not guarantee the accuracy of probable costs. Such probable costs represent only Alliance Consulting Engineers, Inc.'s judgment as a professional opinion and are supplied for general guidance for Public Safety Complex based on the *Conceptual Site Plan for Public Safety Complex in Newberry County, South Carolina* dated March 9, 2022.
- Unit Prices and quantities are subject to variation upon final design.
- Preliminary Cost Opinion assumes on-site soils are suitable to meet compaction criteria.
- Cost of Materials are based on rate of \$124/barrel on crude oil and recent bid climate in the area.
- Preliminary Cost Opinion does not include any permitting, review or impact fees associated with SCDOT, SCDHEC, City of Newberry, or Newberry.
- Preliminary Cost Opinion does not include the acquisition of additional Right of Way.
- Preliminary Cost Opinion does not include any allowances for Drainage Easements.
- Preliminary Cost Opinion assumes typical project scope for similar development in the Newberry County area.
- Preliminary Cost Opinion assumes Pavement sections to be verified based on Geotechnical Subsurface Exploration.
- Building Pad Cost and Construction materials Testing Services have been provided for budgetary purposes and should be verified upon completion of construction plans.

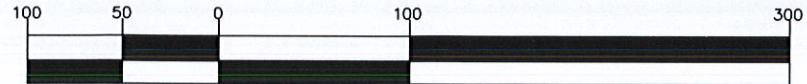
PRELIMINARY



Prepared by: Alliance Consulting Engineers, Inc.



NOTE: OPEN SPACE TO BE UTILIZED TO MEET BUFFER, LANDSCAPE, AND/OR STORMWATER REQUIREMENTS PER ORDINANCES OF STATE AND LOCAL AGENCIES AT THE TIME OF DEVELOPMENT.



Project No. 21243-0036
March 9, 2022
(IN FEET)



Conceptual Site Plan Public Safety Complex Newberry County, South Carolina



ALLIANCE
CONSULTING ENGINEERS
Prepared by Alliance Consulting Engineers, Inc.