



ALLIANCE CONSULTING ENGINEERS, INC.

POST OFFICE BOX 8147
COLUMBIA, SC 29202-8147

PHONE: (803) 779-2078 FAX: (803) 779-2079
www.allianceCE.com

To:	Potential Bidders and Plan Holders	Project No. 17125-0036
Re:	Addendum No. 2	Provided Via Email/US Mail
Project:	City of Newberry Recreational Complex on Approximately 200-acres along SC Highway 34 for the City of Newberry in Newberry County, South Carolina	
Date	April 19, 2018	
Bid Date:	April 25, 2018	Page 1 of 19

This Addendum is issued pursuant to the Conditions of the Contract and is hereby made part of the Contract Documents and Technical Specifications for the City of Newberry Recreational Complex on Approximately 200-acres along SC Highway 34 for the City of Newberry in Newberry County, South Carolina. The addendum serves to clarify, revise, and supersede information from Contract Documents and Specifications. The Bidder shall acknowledge receipt of this Addendum in the appropriate space on the Bid Form. All attachments, if any, are part of this document.

- 1. Section 00 41 00 – Bid Form:** Delete ‘Section 00 41 00 – Bid Form’ in its entirety for the City of Newberry Recreational Complex on Approximately 200-acres along SC Highway 34 for the City of Newberry in Newberry County, South Carolina Bid Documents dated July 2017 and replace with the attached ‘Section 00 41 00 –Bid Form’ for the update and, a copy of which is attached hereto and shall be used by all bidders. The items that were revised are as follows:
 - Item 23 – 36-inch RCP – Class III (3 feet to 10 feet deep) has been revised to 975 LF
 - Item 27 – 36-inch Single Wall HDPE Pipe (5 feet to 12 feet deep) has revised to 0 LF
- 2. Clarification:** *Addendum 1 noted the Bid Date was to be April 28, 2018.* Please note the bid date is April 25, 2018 at 3:00 pm.
- 3. Clarification:** Question “Who is the approved pump supplier?” Clarification is noted in Specification Section 33 32 19 - Wastewater Pump Station is noted as ABS Pumps or equal.
- 4. Clarification:** Question “Will the lighting contractor need to design/build the lighting system with electrical service, panels, underground conduit and wiring to light pole that the supplier will be supplying?” Clarification to note that the two (2) lighting suppliers have a lighting layout and control panel as part of their system. The underground conduit was denoted in the Addendum #1 in sheets C4.1 and C4.2. Wiring will be supplied by the contractor. The control system will be located in the proposed Concession Building which will be bid by the Owner.
- 5. Clarification:** Question “Will it be okay to leave excess mulch from the grinding operation on-site for owner’s future use?” The Owner has approval leaving excess mulch on-site and the location will be determined during construction.

6. **Clarification:** Question “How will unsuitable soil excavation and replacement be paid for? The geotechnical report shows trace organics in boring B-5 at 3 feet below the existing surface.” The site is an unclassified, the geotechnical report has been provided for reference. Contractors shall bid as they see fit knowing these parameters
7. **Clarification:** Question “Wastewater Pump Station:
 - a. “Is a SCADA or telemetry system required?” No
 - b. “Is a generator required?” No
 - c. “Is a generator pad required?” No
8. **Sheet C7.1 – Storm Drainage Profiles (Sheet 2 of 4) dated June 2017 (Reference CSK 1):** Clarification to Note #2 at top right corner to state “2. CB 2.18 to CB 2.23 are to be Nyloplast drain Basin. See Detail on Sheet C12.2.” in lieu of Sheet C12.7 dated April 19, 2018 to be attached hereto.
9. **Sheet C7.2 – Storm Drainage Profiles (Sheet 3 of 4) dated June 2017 (Reference Sheet C7.2 Replacement):** Clarification to pipe reference in the profile SD System 2.6 noted 12-inch RCP between CB 2.24 and CB 2.23, which has been corrected to note 12-inch Corrugated HDPE as well as profile SD System 2.7 noted the same pipe material between CB 2.26 and CB 2.25 corrected to note 12-inch Corrugate HDPE dated April 19, 2018 to be attached hereto.
10. **Sheet C15.2 – Utility Details (3 of 3) dated December 2017 (Reference Sheet C15.2 Replacement):** Clarification on the general notes with the box on top right corner of sheet will be removed due to conflict with plans and specifications. Clarification to note #7 on the left top corner will be to remove “control panel to be supplied by ITT Flygt Corporation” and replaced with “control panel to be supplied by pump supplier”. Added note #8 in the notes on the left top corner of sheet to state “The pump supplier to include a generator receptacle within the control panel.” dated April 19, 2018 to be attached hereto.

Attachments:

- Section 00 41 00- Bid Form (14 pages)
- Sheet C7.1 Storm Drainage Profiles (Sheet 2 of 4) (CSK 1 – 1 page)
- Sheet C7.2 Storm Drainage Profiles (Sheet 3 of 4) (Replace – 1 page)
- Sheet C15.2 Utility Details (Sheet 3 of 3) (Replace – 1 page)

-----End of Addendum No. 2-----

**SECTION 00 41 00
BID FORM**

**The City of Newberry Recreational Complex on
Approximately 200-Acres along SC Highway 34
For the City of Newberry**

IN

**NEWBERRY COUNTY, SOUTH CAROLINA
BID DOCUMENT NO.: 2018-05**

TABLE OF ARTICLES

ARTICLE 1 – BID RECIPIENT.....	2
ARTICLE 2 – BIDDER'S ACKNOWLEDGEMENTS.....	2
ARTICLE 3 – BIDDER'S REPRESENTATIONS.....	2
ARTICLE 4 – FURTHER REPRESENTATIONS.....	3
ARTICLE 5 – BASIS OF BID.....	4
ARTICLE 6 – TIME OF COMPLETION.....	5
ARTICLE 7 – ATTACHMENTS TO THIS BID.....	5
ARTICLE 8 – DEFINED TERMS.....	5
ARTICLE 9 – BID SUBMITTAL.....	6

ARTICLE 1 - BID RECIPIENT

1.01 This Bid is submitted to: Newberry County
P.O. Box 156 (Mailing Address)
1309 College Street (Physical Address)
Newberry, SC 29108

1.02 Bids are to be delivered to: Newberry County
Ms. Crystal Waldrop, Purchasing Director
P.O. Box 156 (Mailing Address)
1309 College Street (Physical Address)
Newberry, SC 29108

1.03 The undersigned Bidder proposes and agrees, if this Bid is accepted, to enter into an Agreement with Owner in the form included in the Bidding Documents to perform all Work as specified or indicated in the Bidding Documents for the prices and within the times indicated in this Bid and in accordance with the other terms and conditions of the Bidding Documents.

ARTICLE 2 - BIDDER'S ACKNOWLEDGEMENTS

2.01 Bidder accepts all of the terms and conditions of the Instructions to Bidders, including without limitation those dealing with the disposition of Bid security. This Bid will remain subject to acceptance for sixty (60) days after the Bid opening, or for such longer period of time that Bidder may agree to in writing upon request of Owner.

ARTICLE 3 - BIDDER'S REPRESENTATIONS

3.01 In submitting this Bid, Bidder represents that:

F. Bidder has examined and carefully studied the Bidding Documents, the other related data identified in the Bidding Documents, and the following Addenda, receipt of which is hereby acknowledged.

Addendum No.	Addendum Date	Initials
_____	_____	_____
_____	_____	_____
_____	_____	_____

G. Bidder has visited the Site and become familiar with and is satisfied as to the general, local and Site conditions that may affect cost, progress, and performance of the Work.

H. Bidder is familiar with and is satisfied as to all federal, state and local Laws and Regulations that may affect cost, progress and performance of the Work.

I. Bidder has carefully studied all: (1) reports of explorations and tests of subsurface conditions at or contiguous to the Site and all drawings of physical conditions in or relating to existing surface or subsurface structures at or contiguous to the Site (except Underground Facilities), which have been identified in Paragraph 4.02 of General Conditions, and (2) reports and drawings of Hazardous Environmental Conditions that have been identified in Paragraph 4.06 of General Conditions.

- J. Bidder has obtained and carefully studied (or accepts the consequences for not doing so) all additional or supplementary examinations, investigations, explorations, tests, studies and data concerning conditions (surface, subsurface and Underground Facilities) at or contiguous to the Site, which may affect cost, progress, or performance of the Work or which relate to any aspect of the means, methods, techniques, sequences, and procedures of construction to be employed by Bidder, including applying the specific means, methods, techniques, sequences, and procedures of construction expressly required by the Bidding Documents to be employed by Bidder, and safety precautions and programs incident thereto.
- K. Bidder does not consider that any further examinations, investigations, explorations, tests, studies, or data are necessary for the determination of this Bid for performance of the Work at the price(s) bid and within the times and in accordance with the other terms and conditions of the Bidding Documents.
- L. Bidder is aware of the general nature of work to be performed by Owner and others at the Site that relates to the Work as indicated in the Bidding Documents.
- M. Bidder has correlated the information known to Bidder, information and observations obtained from visits to the Site, reports and drawings identified in the Bidding Documents, and all additional examinations, investigations, explorations, tests, studies, and data with the Bidding Documents.
- N. Bidder has given Engineer written notice of all conflicts, errors, ambiguities, or discrepancies that Bidder has discovered in the Bidding Documents, and the written resolution thereof by Engineer is acceptable to Bidder.
- O. The Bidding Documents are generally sufficient to indicate and convey understanding of all terms and conditions for the performance of the Work for which this Bid is submitted.
- P. Bidder will submit written evidence of its authority to do business in the state where the Project is located not later than the date of its execution of the Agreement.

ARTICLE 4 - FURTHER REPRESENTATIONS

4.01 Bidder further represents that:

- A. This Bid is genuine and not made in the interest of or on behalf of any undisclosed individual or entity and is not submitted in conformity with any agreement or rules of any group, association, organization or corporation.
- B. Bidder has not directly or indirectly induced or solicited any other Bidder to submit a false or sham Bid.
- C. Bidder has not solicited or induced any individual or entity to refrain from bidding.
- D. Bidder has not sought by collusion to obtain for itself any advantage over any other Bidder or over Owner.

ARTICLE 5 - BASIS OF BID

5.01 Bidder will complete the Work in accordance with the Contract Documents for the following unit price(s):

The City of Newberry Recreational Complex on Approximately 200-Acres along SC Highway 34 for the City of Newberry in Newberry County, South Carolina

Item No.	Description	Unit	Estimated Quantity	Unit Price	Bid Price
1	Mobilization/Bonds	LS	1	\$	\$
2	Clearing and Grubbing	AC	43	\$	\$
3	Temporary Construction Entrance	EA	1	\$	\$
4	Silt Fence	LF	7,300	\$	\$
5	Sediment Tubes	EA	65	\$	\$
6	SC150 Erosion Control Matting in Channels	SY	30,500	\$	\$
7	SC250 Erosion Control Matting on Slopes	SY	11,300	\$	\$
8	Rip-Rap Outlet/Inlet Protection	SY	90	\$	\$
9	Outlet Riser Structure	EA	3	\$	\$
10	Skimmer with Temporary Transition Pipe Connection	EA	4	\$	\$
11	8-inch Skimmer with Temporary Aluminum Riser cap for Existing Pond Riser	EA	1	\$	\$
12	Silt Baffles	LF	700	\$	\$
13	Rip-Rap in Earthen Baffle and Emergency Spillway	SY	525	\$	\$
14	Earthwork (General Excavation/Backfill/Compaction)	LS	1	\$	\$
15	Yard Inlet (Concrete Structure Type 9) - Two (2) feet to fifteen (15) feet deep	EA	22	\$	\$
16	Drop Inlet (Concrete Structure 24-inch x 24-inch) - Nine (9) to 11 feet deep	EA	2	\$	\$
17	Junction Box (Concrete Structure) - Three (3) to 14 feet deep	EA	12	\$	\$
18	12-inch Catch Basin (ADS Structure in slopes) - Three (3) to six (6) feet deep	EA	11	\$	\$
19	18-inch Catch Basin (ADS Structure in slopes) - Six (6) feet deep	EA	1	\$	\$
20	12-inch RCP - Class III (1 foot to 9 feet deep)	LF	640	\$	\$
21	18-inch RCP - Class III (1 foot to 11 feet deep)	LF	1,400	\$	\$
22	24-inch RCP - Class III (1 foot to 11 feet deep)	LF	865	\$	\$
23	36-inch RCP - Class III (3 feet to 10 feet deep)	LF	975	\$	\$
24	12-inch Single Wall HDPE Pipe (1 foot to 5 feet deep)	LF	450	\$	\$
25	18-inch Single Wall HDPE Pipe (2 feet to 11 feet deep)	LF	190	\$	\$
26	24-inch Single Wall HDPE Pipe (3 feet to 4 feet deep)	LF	415	\$	\$
27	Inlet Protection	EA	22	\$	\$
28	1 1/2-inch Asphalt Surface Course (Type C)	SY	12,300	\$	\$

Item No.	Description	Unit	Estimated Quantity	Unit Price	Bid Price
29	1 1/2-inch Asphalt Intermediate Binder Course (Type C)	SY	12,300	\$	\$
30	8 1/2-inch Graded Aggregate Base Course	SY	12,300	\$	\$
31	Roadway Centerline Striping (Double Yellow)	LF	2,965	\$	\$
32	24-inch Solid White Stop Bar	EA	4	\$	\$
33	Signage	LS	1	\$	\$
34	8 1/2-inch Graded Aggregate Base Course	SY	9,330	\$	\$
35	2 1/2-inch Asphalt Surface Course (Type C)	SY	9,330	\$	\$
36	Signage (ADA & Stop)	LS	1	\$	\$
37	Striping (Solid White)	LF	6,480	\$	\$
38	4-inch Concrete Pavement (6-foot Sidewalk)	SY	760	\$	\$
39	4-inch Concrete Pavement (9-foot Sidewalk)	SY	305	\$	\$
40	4-inch Concrete Pavement (12-foot Sidewalk)	SY	2,480	\$	\$
41	Concrete Wheel Stops	EA	10	\$	\$
42	Concrete Ramp	SY	200	\$	\$
43	Metal Handrail	LF	475	\$	\$
44	Concrete Stairs	LS	1	\$	\$
45	Wood Chip Mulch (8-ft wide)	SY	2,455	\$	\$
46	Post and Cable Fence along Northern Field Edge and Walking Trail	LF	1,155	\$	\$
47	Park Benches	EA	6	\$	\$
48	Entrance Sign (5-foot by 3-foot Masonry)	LS	1	\$	\$
49	2-inch Conduit for Lighting to Multipurpose Fields	LF	200	\$	\$
50	Southern Live Oak Tree	EA	7	\$	\$
51	Armstrong Maple Tree	EA	10	\$	\$
52	Kaleidoscope Abelia Shrub	EA	14	\$	\$
53	Nellie Stevens Holly Shrub	EA	2	\$	\$
54	Dwarf Chinese Holly Shrub	EA	4	\$	\$
55	Natchez Crape Myrtle Tree	EA	18	\$	\$
56	Mulch for Landscaping	SY	60	\$	\$
57	Permanent Grassing	AC	23	\$	\$
58	Temporary Grassing	AC	5.5	\$	\$
Total Base Bid:				\$	\$

Total Bid in Words

_____ Dollars _____ Cents

(\$ _____)

Upon the receipt of the bids, Newberry County shall review the bids received and determine the scope of work for this project based on the available budget for the project. The contract for this project shall be awarded to the low bidder for the project scope as determined by the sum total of the base bid portion or the combined sum of the base bid and approved base bid alternates depending on the scope of the project selected.

The above unit prices shall include all labor, materials, bailing, shoring, removal, overhead, profit, insurance, etc., to complete the finish work as stipulated in the Bid Documents.

Unit Prices have been computed in accordance with Paragraph 11.03.B of the General Conditions.

- A. Bidder acknowledges that estimated quantities are not guaranteed and are solely for the purpose of comparison of Bids, and final payment for all Unit Price Bid items will be based on actual quantities, determined as provided in the Contract Documents.

5.02 Base Bid Alternate No. 1 - Bidder will complete the Work in accordance with the Contract Documents for the following unit price(s):

Water System for the City of Newberry Recreational Complex on Approximately 200-Acres along SC Highway 34 for the City of Newberry in Newberry County, South Carolina

Item No.	Description	Unit	Estimated Quantity	Unit Price	Bid Price
1	Mobilization/Bonds	LS	1	\$	\$
2	16x6-inch Tapping Sleeve Connection	EA	1	\$	\$
3	6-inch PVC Watermain	LF	1,790	\$	\$
4	6-inch Pressure Reducer Valve and Manhole	EA	1	\$	\$
5	6-inch Gate Valve	EA	2	\$	\$
6	6-inch Tee	EA	1	\$	\$
7	6-inch Plug w/ blocking	EA	1	\$	\$
8	Fire Hydrant Assembly and Appurtenances	EA	1	\$	\$
9	2-inch Sch 40 PVC Watermain	LF	1,160	\$	\$
10	2-inch Meter	EA	1	\$	\$
11	2-inch Backflow Unit	EA	1	\$	\$
12	Vault for Meter and Backflow Preventer	EA	2	\$	\$
13	2-inch Gate Valve	EA	2	\$	\$
14	2-inch 90 Degree Bend	EA	3	\$	\$
15	2-inch 45 Degree Bend	EA	2	\$	\$

Total Base Bid Alternate 1:	\$
-----------------------------	----

Total Base Bid Alternate 1 in Words _____ Dollars _____ Cents

(\$ _____)

Upon the receipt of the bids, Newberry County shall review the bids received and determine the scope of work for this project based on the available budget for the project. The contract for this project shall be awarded to the low bidder for the project scope as determined by the sum total of the base bid portion or the combined sum of the base bid and approved base bid alternates depending on the scope of the project selected.

The above unit prices shall include all labor, materials, bailing, shoring, removal, overhead, profit, insurance, etc., to complete the finish work as stipulated in the Bid Documents.

Unit Prices have been computed in accordance with Paragraph 11.03.B of the General Conditions.

Upon the receipt of the bids, Newberry County shall review the bids received and determine the scope of work for this project based on the available budget for the project. The contract for this project shall be awarded to the low bidder for the project scope as determined by the sum total of the base bid portion or the combined sum of the base bid and approved base bid alternates depending on the scope of the project selected.

The above unit prices shall include all labor, materials, bailing, shoring, removal, overhead, profit, insurance, etc., to complete the finish work as stipulated in the Bid Documents.

Unit Prices have been computed in accordance with Paragraph 11.03.B of the General Conditions

- A. Bidder acknowledges that estimated quantities are not guaranteed, and are solely for the purpose of comparison of Bids, and final payment for all Unit Price Bid items will be based on actual quantities, determined as provided in the Contract Documents.

5.03 Base Bid Alternate No. 2 - Bidder will complete the Work in accordance with the Contract Documents for the following unit price(s):

Wastewater System for the City of Newberry Recreational Complex on Approximately 200-Acres along SC Highway 34 for the City of Newberry in Newberry County, South Carolina					
--	--	--	--	--	--

Item No.	Description	Unit	Estimated Quantity	Unit Price	Bid Price
1	Mobilization/Bonds	LS	1	\$	\$
2	6-inch PVC Gravity Wastewater (5 - 6 feet deep)	LF	205	\$	\$
3	8-inch PVC Gravity Wastewater (5 - 6 feet deep)	LF	442	\$	\$
4	Manhole (5 - 6 feet deep)	EA	2	\$	\$
5	4-inch PVC Wastewater Forcemain	LF	4,655	\$	\$
6	4x8 Increase in Forcemain	EA	1	\$	\$
7	8-inch PVC Wastewater Forcemain	LF	20	\$	\$
8	175 GPM Wastewater Pump Station (Complete Construction in accordance with City of Newberry County Specifications that include but not limited to the wetwell and valve pit with appurtenances as noted, all pumps and materials for proper operations, all controls systems required to operate the pumps and systems, electrical required to operate the system unless otherwise noted, gravel, water service, one (1) spare pump, three (3) pumps total)	LS	1	\$	\$
9	Air Relief w/ Manhole	EA	3	\$	\$
10	4-inch 90 Degree Bend	EA	2	\$	\$
11	4-inch 45 Degree Bend	EA	3	\$	\$
12	12-inch Steel Casing for Bore and Jack under Oliver Court and Existing Church Driveway	LF	99	\$	\$
13	Connection to Existing Manhole	EA	1	\$	\$
14	Saw Cut and Repair Existing Driveway	EA	5	\$	\$
15	2-inch Asphaltic Concrete Surface for Open Cut Repair at Existing Driveways (Type D for Low Volume Driveway)	SY	335	\$	\$

Item No.	Description	Unit	Estimated Quantity	Unit Price	Bid Price
16	8-inch Stabilized ABC for Open Cut Repair at Existing Driveways (Type D for Low Volume Driveway)	SY	335	\$	\$
17	4-inch Concrete Pavement for Pump Station Pad	SY	20	\$	\$
Total Base Bid Alternate 2:				\$	

Total Base Bid Alternate 2 in Words

_____ Dollars _____ Cents

(\$ _____)

Upon the receipt of the bids, Newberry County shall review the bids received and determine the scope of work for this project based on the available budget for the project. The contract for this project shall be awarded to the low bidder for the project scope as determined by the sum total of the base bid portion or the combined sum of the base bid and approved base bid alternates depending on the scope of the project selected.

The above unit prices shall include all labor, materials, bailing, shoring, removal, overhead, profit, insurance, etc., to complete the finish work as stipulated in the Bid Documents.

Unit Prices have been computed in accordance with Paragraph 11.03.B of the General Conditions.

Upon the receipt of the bids, Newberry County shall review the bids received and determine the scope of work for this project based on the available budget for the project. The contract for this project shall be awarded to the low bidder for the project scope as determined by the sum total of the base bid portion or the combined sum of the base bid and approved base bid alternates depending on the scope of the project selected.

The above unit prices shall include all labor, materials, bailing, shoring, removal, overhead, profit, insurance, etc., to complete the finish work as stipulated in the Bid Documents.

Unit Prices have been computed in accordance with Paragraph 11.03.B of the General Conditions

- A. Bidder acknowledges that estimated quantities are not guaranteed, and are solely for the purpose of comparison of Bids, and final payment for all Unit Price Bid items will be based on actual quantities, determined as provided in the Contract Documents.

5.04 Base Bid Alternate No. 3 - Bidder will complete the Work in accordance with the Contract Documents for the following unit price(s):

Irrigation System for the City of Newberry Recreational Complex on Approximately 200-Acres along SC Highway 34 for the City of Newberry in Newberry County, South Carolina					
--	--	--	--	--	--

Item No.	Description	Unit	Estimated Quantity	Unit Price	Bid Price
1	Mobilization/Bonds	LS	1	\$	\$
2	Irrigation Pump System (including the pump, controls, housing enclosure unit, intake line in the existing pond, and concrete pad for pump and housing enclosure unit to be installed with	LS	1	\$	\$
3	4-inch Watermain from pump with appurtenances	LF	575	\$	\$
4	3-inch Watermain loop with appurtenances	LF	2,695	\$	\$
5	Irrigation System for Multipurpose Fields	LS	1	\$	\$
6	6-inch Perforated French Underdrain and Wash Stone System for Multipurpose Fields	LF	1,610	\$	\$
Total Base Bid Alternate 3:				\$	

Total Base Bid Alternate 3 in Words

Dollars

Cents

(\$ _____)

Upon the receipt of the bids, Newberry County shall review the bids received and determine the scope of work for this project based on the available budget for the project. The contract for this project shall be awarded to the low bidder for the project scope as determined by the sum total of the base bid portion or the combined sum of the base bid and approved base bid alternates depending on the scope of the project selected.

The above unit prices shall include all labor, materials, bailing, shoring, removal, overhead, profit, insurance, etc., to complete the finish work as stipulated in the Bid Documents.

Unit Prices have been computed in accordance with Paragraph 11.03.B of the General Conditions.

Upon the receipt of the bids, Newberry County shall review the bids received and determine the scope of work for this project based on the available budget for the project. The contract for this project shall be awarded to the low bidder for the project scope as determined by the sum total of the base bid portion or the combined sum of the base bid and approved base bid alternates depending on the scope of the project selected.

The above unit prices shall include all labor, materials, bailing, shoring, removal, overhead, profit, insurance, etc., to complete the finish work as stipulated in the Bid Documents.

Unit Prices have been computed in accordance with Paragraph 11.03.B of the General Conditions

- A. Bidder acknowledges that estimated quantities are not guaranteed, and are solely for the purpose of comparison of Bids, and final payment for all Unit Price Bid items will be based on actual quantities, determined as provided in the Contract Documents.

5.05 Base Bid Alternate No. 4 - Bidder will complete the Work in accordance with the Contract Documents for the following unit price(s):

GABC Access Drive and Parking Area for the City of Newberry Recreational Complex on Approximately 200-Acres along SC Highway 34 for the City of Newberry in Newberry County, South Carolina					
Item No.	Description	Unit	Estimated Quantity	Unit Price	Bid Price
1	Mobilization/Bonds	LS	1	\$	\$
2	4-inch GABC Stone Access Drives and Parking	SY	1,100	\$	\$
Total Base Bid Alternate 4:				\$	

Total Base Bid Alternate 4 in Words

_____ Dollars

_____ Cents

(\$ _____)

Upon the receipt of the bids, Newberry County shall review the bids received and determine the scope of work for this project based on the available budget for the project. The contract for this project shall be awarded to the low bidder for the project scope as determined by the sum total of the base bid portion or the combined sum of the base bid and approved base bid alternates depending on the scope of the project selected.

The above unit prices shall include all labor, materials, bailing, shoring, removal, overhead, profit, insurance, etc., to complete the finish work as stipulated in the Bid Documents.

Unit Prices have been computed in accordance with Paragraph 11.03.B of the General Conditions.

Upon the receipt of the bids, Newberry County shall review the bids received and determine the scope of work for this project based on the available budget for the project. The contract for this project shall be awarded to the low bidder for the project scope as determined by the sum total of the base bid portion or the combined sum of the base bid and approved base bid alternates depending on the scope of the project selected.

The above unit prices shall include all labor, materials, bailing, shoring, removal, overhead, profit, insurance, etc., to complete the finish work as stipulated in the Bid Documents.

Unit Prices have been computed in accordance with Paragraph 11.03.B of the General Conditions

- A. Bidder acknowledges that estimated quantities are not guaranteed, and are solely for the purpose of comparison of Bids, and final payment for all Unit Price Bid items will be based on actual quantities, determined as provided in the Contract Documents.

5.06 Base Bid Alternate No. 5 - Bidder will complete the Work in accordance with the Contract Documents for the following unit price(s):

Cost Difference for Clearing and Grubbing assuming that these activities will follow previously completed Timbering Operations for the City of Newberry Recreational Complex on Approximately 200-Acres along SC Highway 34 for the City of Newberry in Newberry County, South Carolina

Item No.	Description	Unit	Estimated Quantity	Unit Price	Bid Price
1	Mobilization/Bonds	LS	1	\$	\$
2	Clearing and Grubbing (following Timbering Operations)	AC	43	\$	\$
Total Base Bid Alternate 5:					\$

Total Base Bid Alternate 5 in Words

_____ Dollars

_____ Cents

(\$ _____)

Upon the receipt of the bids, Newberry County shall review the bids received and determine the scope of work for this project based on the available budget for the project. The contract for this project shall be awarded to the low bidder for the project scope as determined by the sum total of the base bid portion or the combined sum of the base bid and approved base bid alternates depending on the scope of the project selected.

The above unit prices shall include all labor, materials, bailing, shoring, removal, overhead, profit, insurance, etc., to complete the finish work as stipulated in the Bid Documents.

Unit Prices have been computed in accordance with Paragraph 11.03.B of the General Conditions.

Upon the receipt of the bids, Newberry County shall review the bids received and determine the scope of work for this project based on the available budget for the project. The contract for this project shall be awarded to the low bidder for the project scope as determined by the sum total of the base bid portion or the combined sum of the base bid and approved base bid alternates depending on the scope of the project selected.

The above unit prices shall include all labor, materials, bailing, shoring, removal, overhead, profit, insurance, etc., to complete the finish work as stipulated in the Bid Documents.

Unit Prices have been computed in accordance with Paragraph 11.03.B of the General Conditions

- A. Bidder acknowledges that estimated quantities are not guaranteed, and are solely for the purpose of comparison of Bids, and final payment for all Unit Price Bid items will be based on actual quantities, determined as provided in the Contract Documents.

5.07 Base Bid Alternate No. 6 - Bidder will complete the Work in accordance with the Contract Documents for the following unit price(s):

Primary Electrical and Street Lighting Conduit for the City of Newberry Recreational Complex on Approximately 200-Acres along SC Highway 34 for the City of Newberry in Newberry County, South					
--	--	--	--	--	--

Item No.	Description	Unit	Estimated Quantity	Unit Price	Bid Price
1	Mobilization/Bonds	LF	1	\$	\$
2	2-inch PVC Conduit, Sch. 40	EA	50,500	\$	\$
3	2-inch PVC, 90° Elbow, Sch. 40	EA	230	\$	\$
4	2-inch PVC Coupling	EA	230	\$	\$
5	4-inch PVC Conduit, Sch. 40	LF	400	\$	\$
6	4-inch PVC, 90° Elbow, Sch. 40	EA	10	\$	\$
7	4-inch PVC Coupling	EA	10	\$	\$
8	Cement (Non-metallic Conduit)	CY	10	\$	\$
9	Pencell Secondary Enclosure	LF	55	\$	\$
10	Marker Tape/Ditch Tape (Red Electric Line Below)	EA	12	\$	\$
11	2-inch PVC End Caps	EA	10	\$	\$
12	4-inch PVC End Caps	EA	6	\$	\$
Total Base Bid Alternate 6:				\$	

Total Base Bid Alternate 6 in Words

_____ Dollars _____ Cents
 (\$ _____)

Upon the receipt of the bids, Newberry County shall review the bids received and determine the scope of work for this project based on the available budget for the project. The contract for this project shall be awarded to the low bidder for the project scope as determined by the sum total of the base bid portion or the combined sum of the base bid and approved base bid alternates depending on the scope of the project selected.

The above unit prices shall include all labor, materials, bailing, shoring, removal, overhead, profit, insurance, etc., to complete the finish work as stipulated in the Bid Documents.

Unit Prices have been computed in accordance with Paragraph 11.03.B of the General Conditions.

Upon the receipt of the bids, Newberry County shall review the bids received and determine the scope of work for this project based on the available budget for the project. The contract for this project shall be awarded to the low bidder for the project scope as determined by the sum total of the base bid portion or the combined sum of the base bid and approved base bid alternates depending on the scope of the project selected.

The above unit prices shall include all labor, materials, bailing, shoring, removal, overhead, profit, insurance, etc., to complete the finish work as stipulated in the Bid Documents.

Unit Prices have been computed in accordance with Paragraph 11.03.B of the General Conditions

- A. Bidder acknowledges that estimated quantities are not guaranteed, and are solely for the purpose of comparison of Bids, and final payment for all Unit Price Bid items will be based on actual quantities, determined as provided in the Contract Documents.

ARTICLE 6 - TIME OF COMPLETION

6.01 The City of Newberry Recreational Complex on Approximately 200-Acres along SC Highway 34 for the City of Newberry in unincorporated Newberry County, South Carolina will be completed within two hundred seventy (270) calendar days after the Notice to Proceed has been issued.

6.02 Bidder accepts the provisions of the Agreement as to liquidated damages in the event of failure to complete the Work within the Contract dates in the amount of \$500 per day for the site for each calendar day required to complete the work in the manner and within the dates as stated in Paragraph 6.01 above.

ARTICLE 7 - ATTACHMENTS TO THIS BID

7.01 The following documents are attached to and made a condition of this Bid:

- A. Required Bid security in the form of five percent (5%) of the total bid amount.
- B. Power of Attorney.

ARTICLE 8 - DEFINED TERMS

8.01 The terms used in this Bid with initial capital letters have the meanings stated in the Instructions to Bidders and General Conditions.

ARTICLE 9 - BID SUBMITTAL

9.01 This Bid submitted by:

An Individual

Name (typed or printed): _____
By: _____ (SEAL)
(Individual's signature)
Title: _____
Doing business as: _____

A Partnership

Partnership Name: _____ (SEAL)
By:
(Signature of general partner -- attach evidence of authority to sign)
Title: _____
Name (typed or printed): _____

A Corporation

Corporation Name: _____ (SEAL)
State of Incorporation: _____
Type (General Business, Professional, Service, Limited Liability): _____

By: _____
(Signature -- attach evidence of authority to sign)
Name (typed or printed): _____
Title: _____ (CORPORATE SEAL)
Attest _____
Date of Authorization to do business in [South Carolina] is ____ / ____ / ____ .

A Joint Venture

Name of Joint Venture: _____
First Joint Venturer Name: _____ (SEAL)
By: _____
(Signature of first joint venture partner -- attach evidence of authority to sign)
Name (typed or printed): _____
Title: _____
Second Joint Venturer Name: _____ (SEAL)
By: _____
(Signature of second joint venture partner -- attach evidence of authority to sign)
Name (typed or printed): _____
Title: _____

(Each joint venturer must sign. The manner of signing for each individual, partnership, and corporation that is a party to the joint venture should be in the manner indicated above.)

Bidder's Business Address _____

Telephone No. _____ Fax No. _____

SUBMITTED on _____, 2018. State Contractor License No. _____.

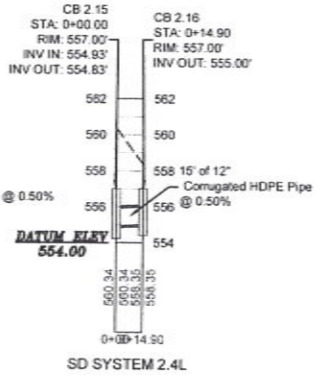
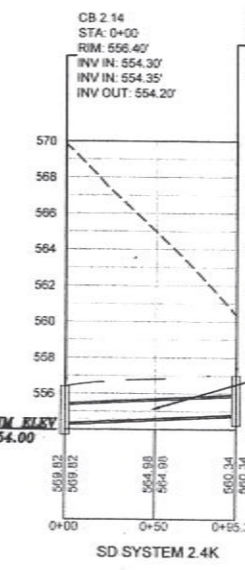
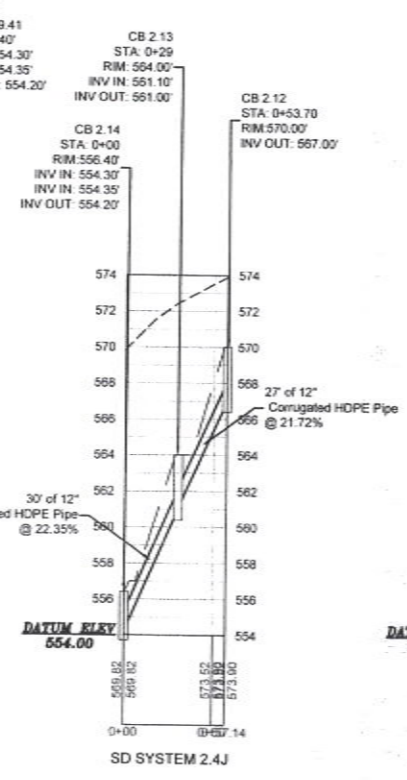
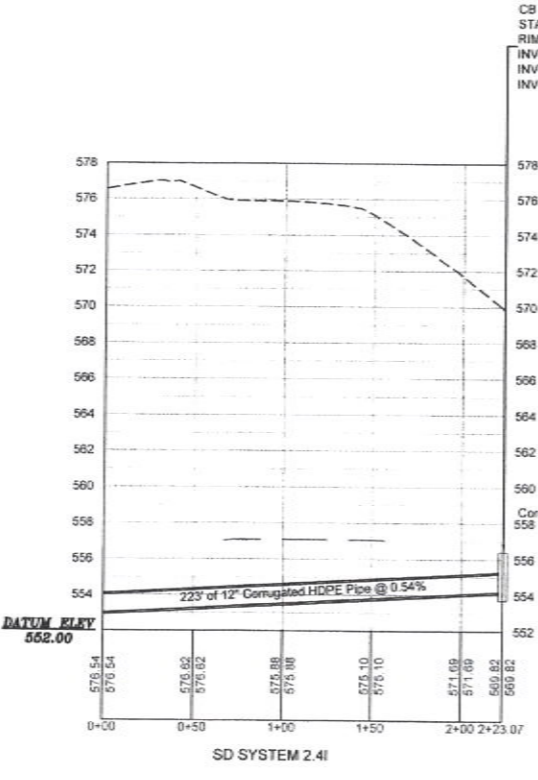
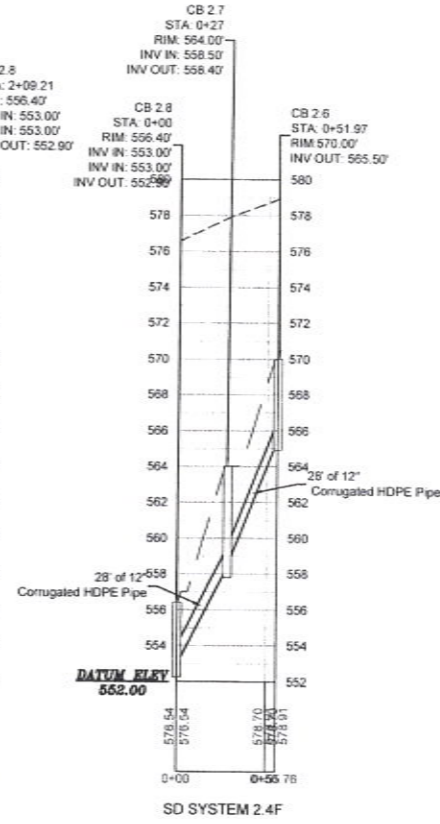
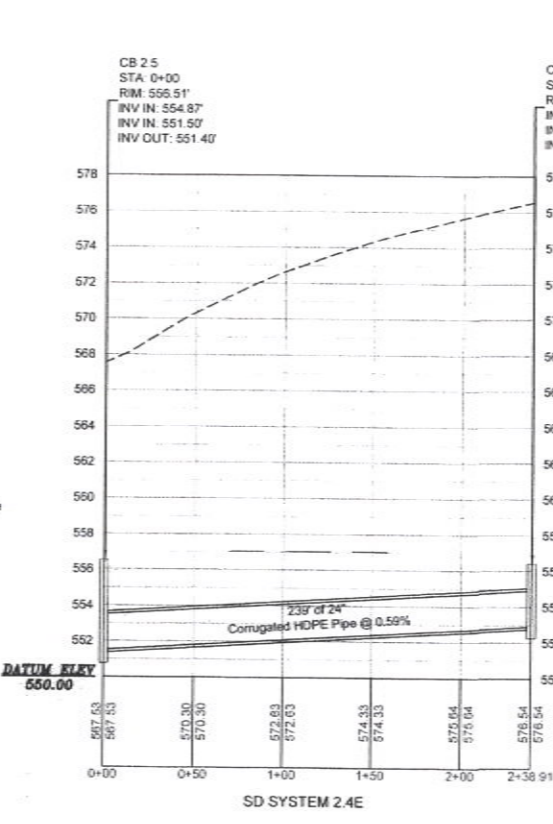
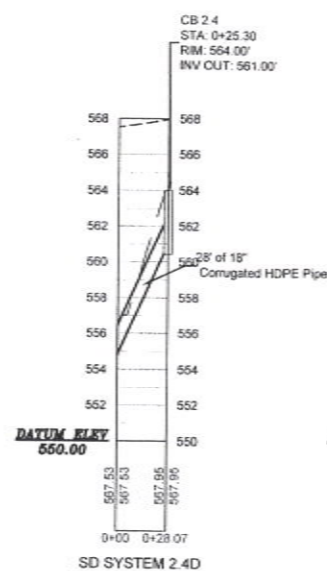
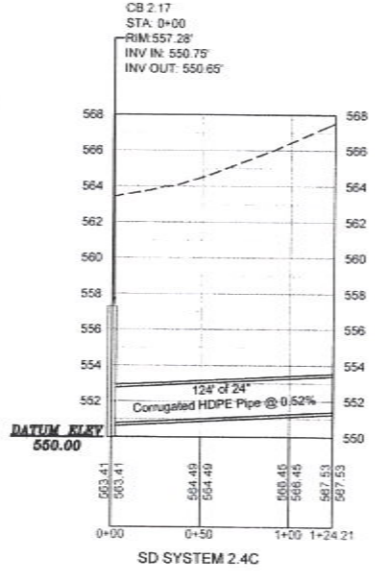
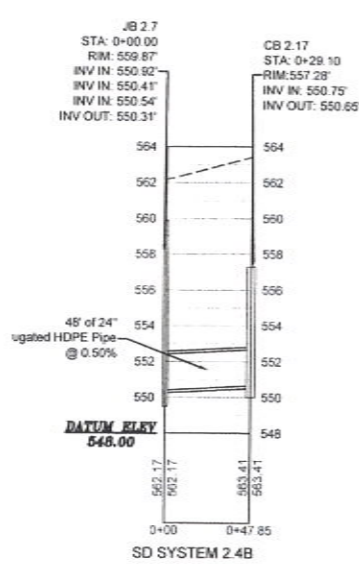
END OF SECTION

NOTES
 1. HDPE PIPE IS TO BE FLEXIBLE AND IS TO FOLLOW THE PROPOSED GRADE (MAINTAIN TWO (2) FEET OF COVER)
 2. CB 2.19 TO CB 2.22 ARE TO BE NYLOPLAST DRAIN BASIN. SEE DETAIL ON SHEET C12.1

REFERENCES
 1. REFERENCE IS MADE TO BOUNDARY SURVEY AND PLAT PREPARED FOR THE CITY OF NEWBERRY BY ABRAHAM LAND SURVEYING DATED MAY 8, 2017 AND UPDATED ON NOVEMBER 20, 2017.

OWNER INFORMATION
 OWNER: CITY OF NEWBERRY
 CONTACT: MR. MATT DEWITT, CITY ADMINISTRATION
 ADDRESS: 1330 COLLEGE STREET
 CITY, STATE: NEWBERRY, SOUTH CAROLINA 29106
 TELEPHONE: (803) 321-1000
 EMAIL: mdewitt@cityofnewberry.com

NOTES
 1. CAD FILES WILL BE PROVIDED TO CONTRACTOR FOR USE WITH SITE STAKING
 2. AS-BUILT TOPOGRAPHIC SURVEY COMPLETED BY A LICENSED SURVEYOR TO BE PROVIDED BY CONTRACTOR UPON PROJECT COMPLETION



STORM DRAINAGE PROFILES
 HORIZONTAL SCALE: 1" = 50'
 VERTICAL SCALE: 1" = 5'

REVISION 15/17

ALLIANCE CONSULTING ENGINEERS
 CONSULTING ENGINEERS
 17125 6036 BASE.dwg

STORM DRAINAGE PROFILES (SHEET 2 OF 4)

THE CITY OF NEWBERRY RECREATIONAL COMPLEX ON APPROXIMATELY 200-ACRES ALONG SC HIGHWAY 34 IN UNINCORPORATED NEWBERRY COUNTY, SOUTH CAROLINA

SHEET C7.1

DWG NO. 01.1157-D21

ALLIANCE CONSULTING ENGINEERS, INC. 1725-0036 NEWBERRY, SOUTH CAROLINA 29108
 PROJECT: 1725-0036 NEWBERRY RECREATIONAL COMPLEX STORM DRAINAGE PROFILES (SHEET 3 OF 4)
 DATE: 01/15/2018

REFERENCES
 1. REFERENCE IS MADE TO BOUNDARY SURVEY AND PLAT PREPARED FOR THE CITY OF NEWBERRY BY ABRAHAM LAND SURVEYING DATED MAY 8, 2017 AND UPDATED ON NOVEMBER 20, 2017.

OWNER INFORMATION
 OWNER: CITY OF NEWBERRY
 CONTACT: MR. MATT DEWITT, CITY ADMINISTRATION
 ADDRESS: 1330 COLLEGE STREET
 CITY, STATE: NEWBERRY, SOUTH CAROLINA 29108
 TELEPHONE: (803) 321-1000
 EMAIL: mdewitt@cityofnewberry.com

NOTES:
 1. CAD FILES WILL BE PROVIDED TO CONTRACTOR FOR USE WITH SITE STAKING.
 2. AS-BUILT TOPOGRAPHIC SURVEY COMPLETED BY A LICENSED SURVEYOR TO BE PROVIDED BY CONTRACTOR UPON PROJECT COMPLETION.

REVISION TABLE

NO.	DATE	DESCRIPTION
1	01/15/2018	ISSUED FOR PERMIT

Professional Engineer Seal for Matt Dewitt, License No. 60585, State of South Carolina.

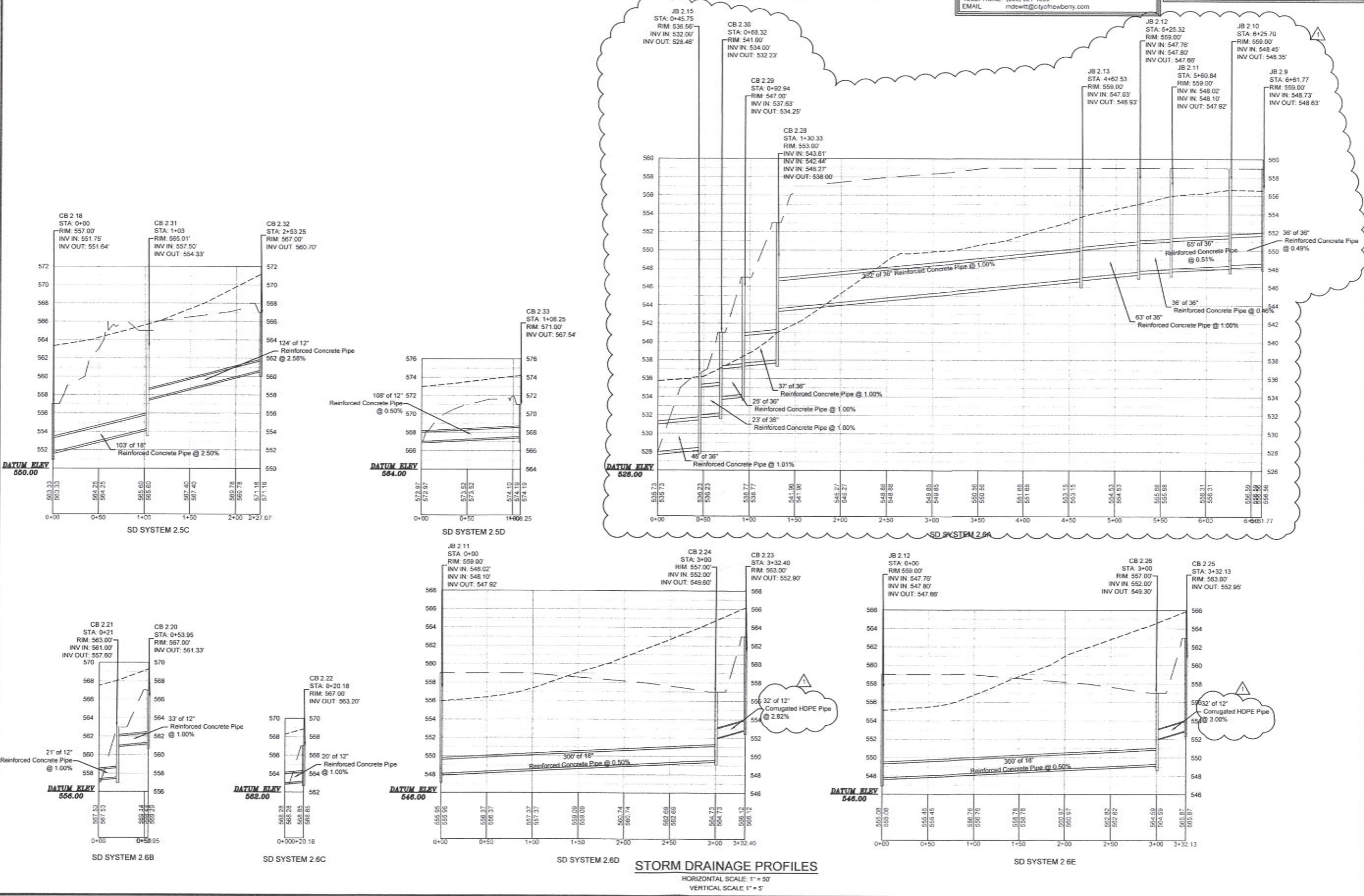
Professional Engineer Seal for Benjamin S. ... License No. 90989, State of South Carolina.

ALLIANCE CONSULTING ENGINEERS
 Alliance Consulting Engineers, Inc.
 1725-0036
 Four Office: 817 Columbia, South Carolina 29202-8107
 Phone: (803) 779-2078 Fax: (803) 779-2079

STORM DRAINAGE PROFILES (SHEET 3 OF 4)

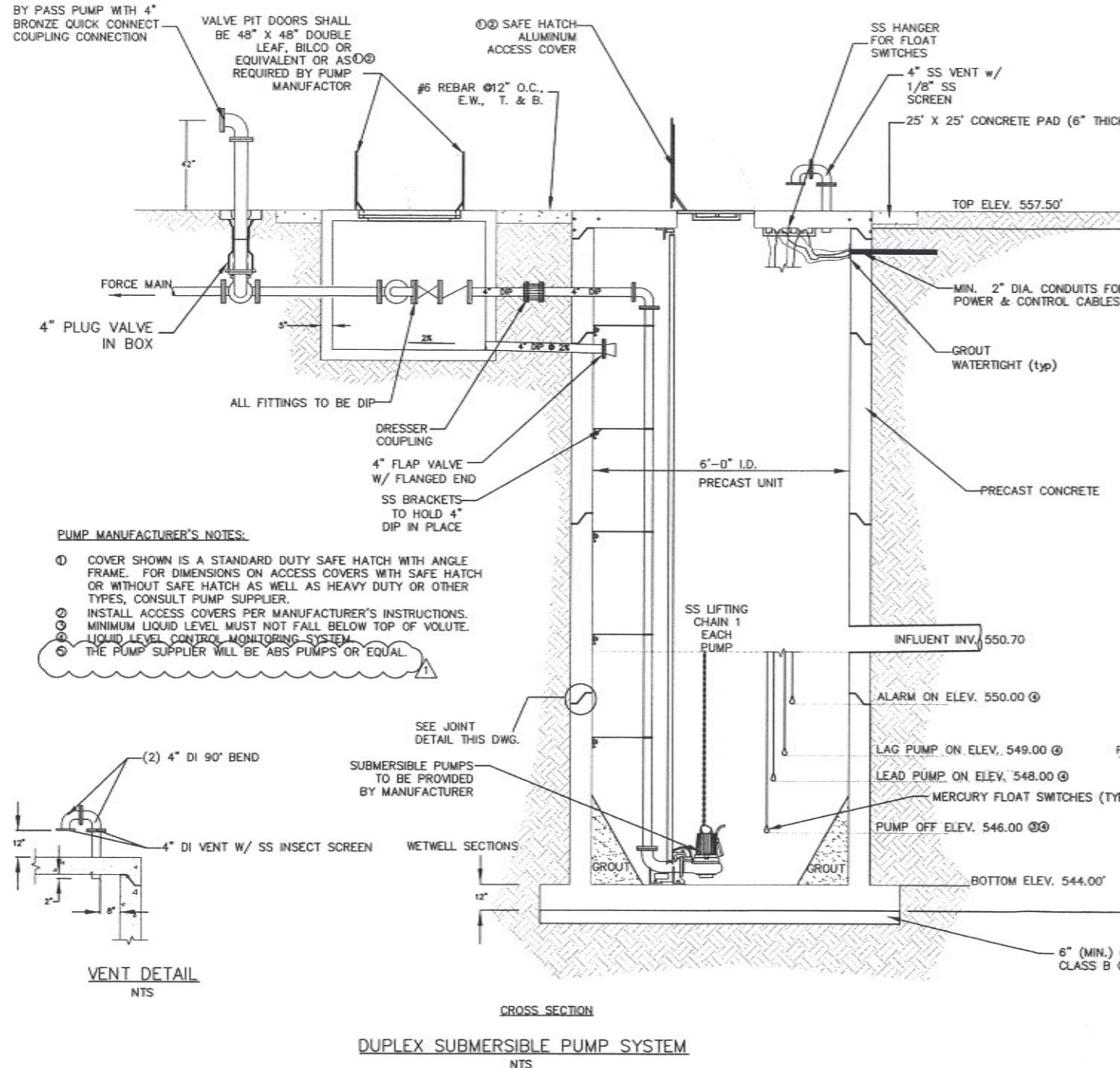
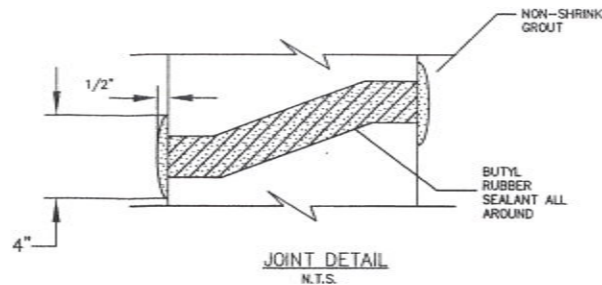
THE CITY OF NEWBERRY RECREATIONAL COMPLEX ON APPROXIMATELY 200-ACRES ALONG SC HIGHWAY 34 IN NEWBERRY COUNTY, SOUTH CAROLINA.

PROJECT: 1725-0036
 SHEET: C7.2
 DWG NO. 01.1157-D21

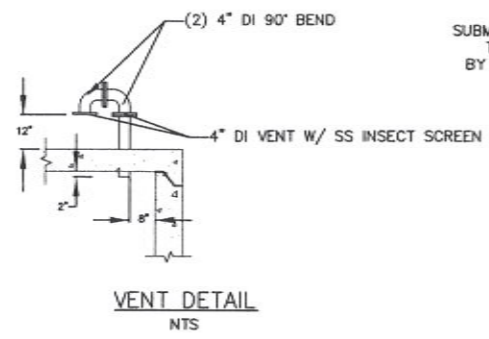
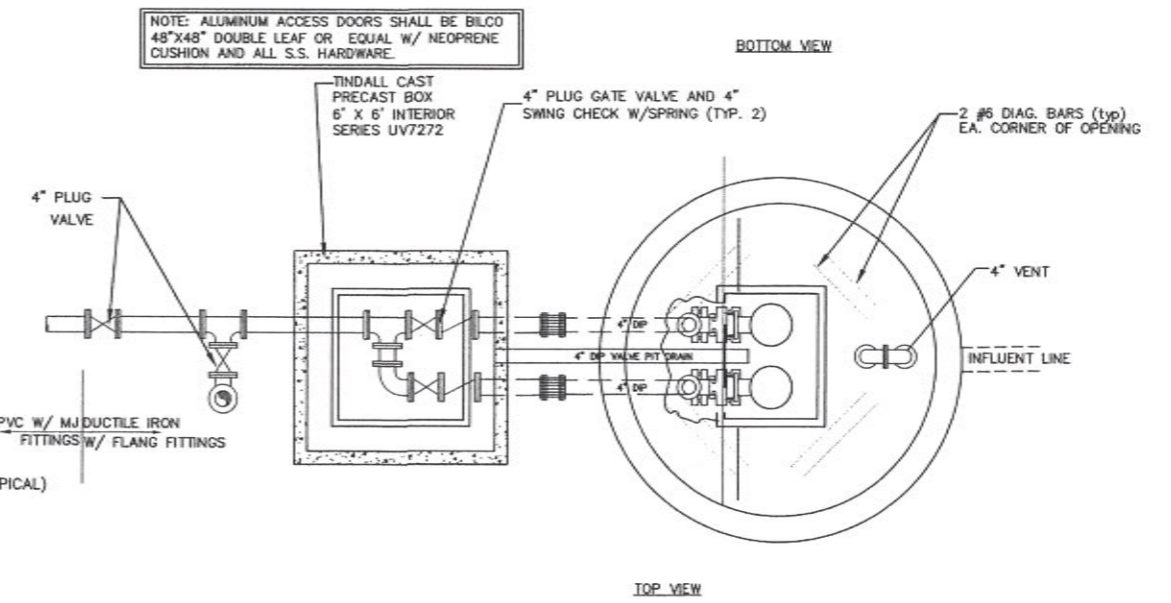
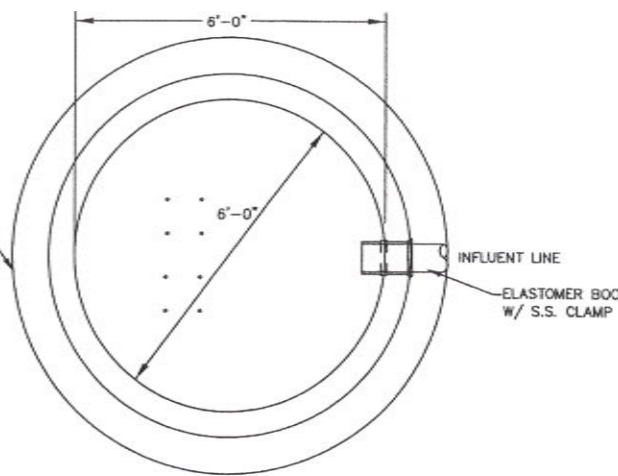


NOTES:

1. PUMPS SHALL BE SUPPLIED WITH 35' OF SUBMERSIBLE CABLE SUITABLE FOR SUBMERSIBLE PUMP APPLICATIONS.
2. SUPPLY 20' OF STAINLESS STEEL LIFTING CHAIN FOR EACH PUMP.
3. WETWELL SHALL BE BACKFILLED W/ COMPACTED SOIL AS EACH SECTION IS INSTALLED. CONTRACTOR IS RESPONSIBLE FOR PREVENTING FLOTATION DURING CONSTRUCTION.
4. ACCESS DOOR FRAMES SHALL BE EQUIPPED W/ DRAINS.
5. FLOAT SWITCHES AND CABLE HOOKS TO BE INSTALLED SO THAT THEY DO NOT INTERFERE WITH THE REMOVAL OF THE PUMPS.
6. ALL NUTS, BOLTS, AND WASHERS IN WET WELL SHALL BE 316 STAINLESS STEEL.
7. CONTROL PANEL TO BE SUPPLIED BY PUMP SUPPLIER. OWNER TO SUPPLY POWER TO THE LIFT STATION. OWNER TO BE RESPONSIBLE FOR INSTALLING ELECTRICAL SERVICE FROM TRANSFORMER TO ELECTRICAL METER AT LIFT STATION. LIFT STATION CONTRACTOR RESPONSIBLE FOR INSTALLATION OF ELECTRICAL PANEL, ALL WIRING AND MATERIALS, INCLUDING WIRING FROM METER TO ELECTRICAL PANEL, ELECTRICAL PANEL TO CONTROL PANEL, AND CONTROL PANEL TO LIFT STATION. CONTRACTOR TO COORDINATE LOCATION OF ELECTRICAL COMPONENTS WITH OWNER.
8. PUMP SUPPLIER TO INCLUDE A GENERATOR RECEPTACLE WITHIN THE CONTROL PANEL.



- PUMP MANUFACTURER'S NOTES:**
- Ⓛ COVER SHOWN IS A STANDARD DUTY SAFE HATCH WITH ANGLE FRAME. FOR DIMENSIONS ON ACCESS COVERS WITH SAFE HATCH OR WITHOUT SAFE HATCH AS WELL AS HEAVY DUTY OR OTHER TYPES, CONSULT PUMP SUPPLIER.
 - Ⓜ INSTALL ACCESS COVERS PER MANUFACTURER'S INSTRUCTIONS. MINIMUM LIQUID LEVEL MUST NOT FALL BELOW TOP OF VOLUTE.
 - Ⓨ LIQUID LEVEL CONTROL MONITORING SYSTEM.
 - Ⓩ THE PUMP SUPPLIER WILL BE ABS PUMPS OR EQUAL.



CROSS SECTION
DUPLIX SUBMERSIBLE PUMP SYSTEM
NTS

<p>REVISION TABLE</p> <table border="1"> <tr><th>NO.</th><th>DATE</th><th>DESCRIPTION</th></tr> <tr><td>1</td><td>1/15/12</td><td>ISSUE FOR PERMIT</td></tr> <tr><td>2</td><td>1/15/12</td><td>ISSUE FOR PERMIT</td></tr> </table>		NO.	DATE	DESCRIPTION	1	1/15/12	ISSUE FOR PERMIT	2	1/15/12	ISSUE FOR PERMIT
NO.	DATE	DESCRIPTION								
1	1/15/12	ISSUE FOR PERMIT								
2	1/15/12	ISSUE FOR PERMIT								
<p>SCALE: AS SHOWN</p>										
<p>UTILITY DETAILS 3 OF 3</p>										
<p>THE CITY OF NEWBERRY RECREATIONAL COMPLEX ON APPROXIMATELY 200+ ACRES ALONG SC HIGHWAY 31 IN UNINCORPORATED NEWBERRY COUNTY, SOUTH CAROLINA</p>										
<p>FILE NAME: C15.0.dwg</p>	<p>SHEET C15.2</p>									
<p>REFERENCE FILE: 17125-0036 BASE.dwg</p>	<p>PROJECT NO. 17125-0036</p>									
<p>DWG NO. 01, 1157-D21</p>										

April 18, 2012, 5:42:22 AM, S:\Projects\17125-0036\Newberry, SC\Drawings\17125-0036-01.dwg, User: jk, Plot: 17125-0036-01.dwg