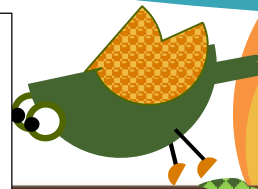


Voter Registration & Elections Board  
Director, Sheli Michelle Madray, [SMadray@NewberryCounty.gov](mailto:SMadray@NewberryCounty.gov)

1872 Wilson Road, Newberry, SC 29108 - 803-321-2121



Please visit [Voter Registration & Elections | Newberry County, SC](https://www.newberrycounty.gov/voter-registration)  
**TODAY :D**

VOTE NBY



July 2026 - Voter Registration & Elections Board



### **PUBLIC NOTICE OF SCHOOL DISTRICT CANDIDATE FILING STATE OF SOUTH CAROLINA - COUNTY OF NEWBERRY**

**Candidate Filing Period:** A candidate filing period for the School District will open at noon on Wednesday, July 1st, 2026, and close at noon on Wednesday, July 15th, 2026.

**Filing Locations:** Newberry County Board of Voter Registration and Elections: at Newberry County Board of Voter Registration and Elections, 1872 Wilson Rd, Newberry (803)321-2121.

**Filing Hours:** Weekdays: 8:30 a.m. - 5:00 p.m. **Filing Fee:** Newberry County - \$100.

**Notice of Election:** This election will be held on Tuesday, November 3rd, 2026.

Any person wishing to vote in this election must be registered by Friday, October 2nd, 2026.

The Early Voting period for this election begins on October 19th, 2026, and ends on Friday, October 30th, 2026.

The following early voting center will be open during the early voting period from 8:30 a.m. until 5:00 p.m., Monday through Friday: Newberry County Voter Registration & Elections Office, 1872 Wilson Road, Newberry, 803-321-2121.