



Photo Source: Natalie Maynor

The most basic and essential services are provided through community facilities. Collectively known as the community infrastructure, these facilities include the buildings, facilities, lands, and services that support the public health, safety, and welfare of Newberry County residents. These assets help shape daily living and work environments, provide the physical framework for the attraction of new businesses and employment opportunities, and provide a foundation for new growth and development. While many community facilities are managed by local governments, others are provided by utilities, hospitals, school systems, and nonprofits.

The Community Facilities Element provides an inventory and assessment of the facilities and services available in the County and surrounding areas. The Element profiles community functions including the organization of local government, annexation, water and sewer service, utilities, solid waste collection, fire and emergency medical services, police, education, health care, recreation, and libraries.

7.1. Government

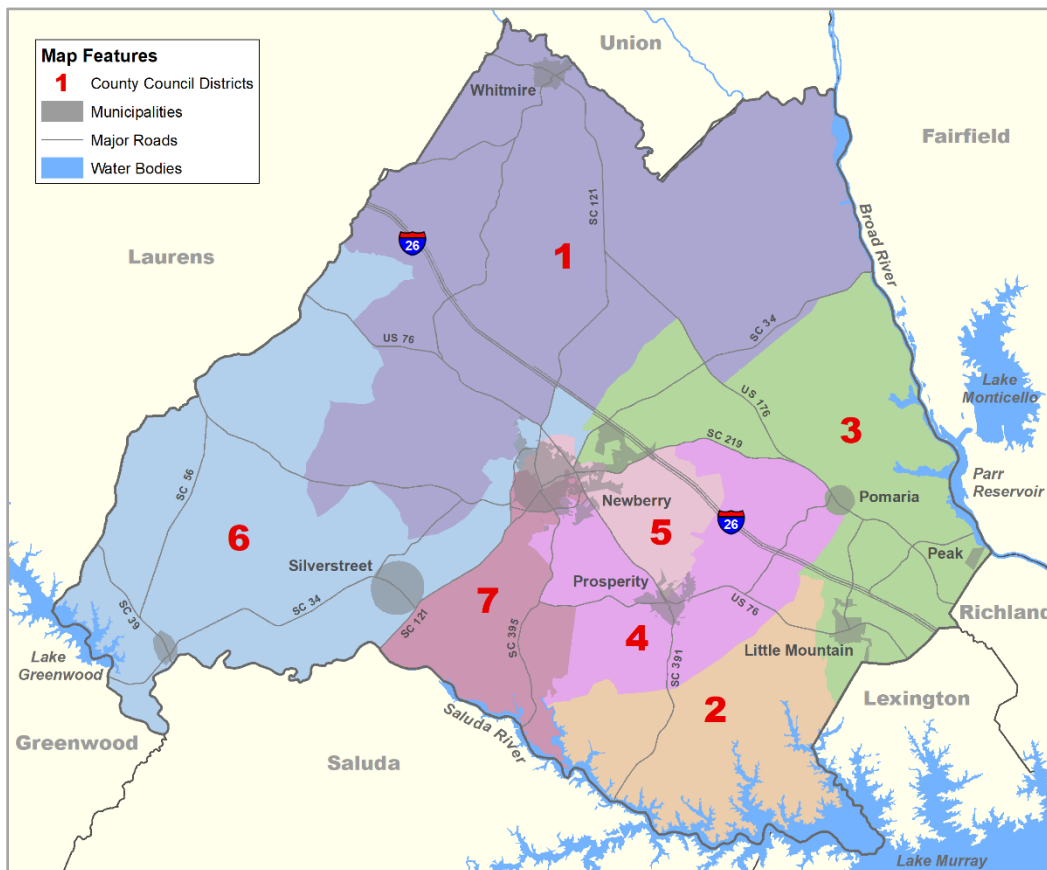
Governmental facilities house activities, persons, and records used in government operations from the municipal to federal levels. The need for new or expanded public facilities is directly related to the growth of a community, since the addition of more people, more homes, and additional

businesses and industries prompt the need for new and expanded governmental services. In some cases, increased services can be accommodated using existing space. However, in many cases a substantial increase in the level and scope of services can require additional operational space or service access points.

7.1.1. Newberry County

Newberry County was formed in 1785 when the General Assembly divided the original Ninety-Six District into six counties. The Town of Newberry was founded in 1789 as the County seat and incorporated in 1832 as the City of Newberry. The County Council consists of seven members representing the seven individual Council districts (Map 7-1). A Council Chairman is elected by the members of Council. Each representative on the County Council serves a four-year term.

Map 7-1. Newberry County Council Districts



Source: Newberry County GIS, 2022

The County is governed under a council/administrator format in which a County Administrator is appointed by the Newberry County Council to serve as its Chief Administrative Officer. The County Administrator is responsible for executing the policies, directives, and legislative actions of County Council; directing and coordinating activities of Newberry County Government; supervising the spending of County funds in accordance with the approved County budget and as directed by Council; preparing reports for Council on finances and administrative activities; informing Council of anticipated revenues that are necessary to meet the financial requirements of the County;

responding to requests for information or assistance from the public; preparing and presenting annual budget requests to Council for approval; overseeing capital projects; participating in economic recruitment activities; and working with Newberry County elected officials in reaching common goals.

Under the direction of the County Administrator, management of County functions is carried out through 19 departments, each headed by elected officials or appointed staff. Newberry County's elected officials include the Auditor, Clerk of Court, Coroner, Probate Judge, Sheriff, Solicitor, and Treasurer. The County employs 214 full-time staff and 12 part-time employees.

Newberry County owns and maintains public properties throughout the County, with many located within the City of Newberry. The locations of major facilities owned by the County are listed in Table 7-1.

Table 7-1. Newberry County Facilities

FACILITY USE	LOCATION
Former Agricultural Building - Assessor, Delinquent Tax, Building, Planning and Zoning, Economic Development	Martin Street
Auditor's and Treasurer's Building	Martin Street
Community Hall - Chamber of Commerce, Public Meeting Space	Main Street
Courthouse - Circuit Judge, Clerk of Court, Solicitor	College Street
Courthouse Annex - Administration, County Attorney, Dept. of Juvenile Justice, Probate Judge, Probation and Parole	College Street
Detention Center and Magistrate's Office	Louis Rich Road
Fairgrounds	Adelaide Street
Health and Human Services Complex - DSS, DHEC, Veteran Affairs	Wilson Road
Lynch's Woods	Walter Cousins Road
Newberry County Animal Control, Animal Shelter	S.C. Highway 34
Hal Kohn Memorial Library (Newberry County Library)	Friend Street
Newberry County Maintenance Shop	S.C. Highway 34
Newberry County Public Works	S.C. Highway 34
Old Jail - Storage and Street Signs	S.C. Highway 34
Piedmont Technical College	Wilson Road
Sheriff Headquarters	Wilson Road
Triangle Gun Club (Old Landfill)	Cockrell Drive
Newberry County Airport	Airport Road
Former Newberry County Library Building	Friend Street
Voter Registration and Elections	Wilson Road
Helena Community Facility	Giff Street
Recreation Office Building	Harrington Street
Maybinton Ball Field	Maybinton Park Road
Whitmire Library	Church Street, Whitmire

7.1.2. Newberry County Municipalities

There are five municipalities in Newberry County, including the City of Newberry and the towns of Little Mountain, Peak, Pomaria, Prosperity, Silverstreet, and Whitmire. Incorporated in 1832, the *City of Newberry* is largest municipality in terms of size (9.1 square miles) and population (10,691 per the 2020 Census) and is the county seat of Newberry County. The City operates under the council/manager form of government in which the City Council acts as the governing body to adopt legislation and set policy. Council hires the City Manager to administer policies and enforce regulations, as well as manage day-to-day municipal operations. The Mayor is elected at-large for a four-year term and presides over council meetings as a council member. The other six council members also serve four-year terms and individually represent one of six council districts. While most of the City's administrative functions are housed in City Hall on College Street, additional facilities include two fire stations, the Police and City Court complex, the Newberry Opera House, the Fire House Conference Center, Wells Japanese Garden, the 128-acre Newberry Recreation Complex, and wastewater and water treatment plants.

The *Town of Little Mountain*, originally known as Ruff's Mountain, was part of Lexington County until it was formally added to Newberry County in 1917. The municipality incorporated in 1890 as the Town of Little Mountain. The Town is 1.52 square miles in size, with the Town Hall located on Depot Street. Little Mountain is governed by a mayor/council form of government, with the mayor and four council members elected at-large for four-year terms. Staffing for the Town includes two part-time employees, a librarian, and the Town Clerk/Treasurer.

The *Town of Peak* is one of the State's smallest towns in both size (0.34 square miles) and population (249 in the 2020 Census). Peak was incorporated in 1880 and is governed by a mayor/council form of government, with the mayor and four council members elected at-large for four-year terms. The Town Hall for Peak is located on River Street.

The *Town of Pomaria* was incorporated in 1840 and is governed by a mayor/council form of government. Pomaria is 1.05 square miles in size. The mayor and four council members are elected at-large for four-year terms. The Town does not have an official town hall and utilizes the old Pomaria School for council meetings.

The *Town of Prosperity* was chartered as Frog Level in 1851. In 1873, at the request of a majority of its citizens, the S.C. Legislature changed the name of the town to Prosperity. Prosperity is 1.98 square miles in size. The Town Hall is located at 305 North Main Street. The Town's Police Department and the Prosperity Civic Center are housed in a renovated 100-year old school building on School Drive. Prosperity is governed by a mayor/council form of government, with the mayor and four council members elected at-large for four-year terms. A Town Administrator is appointed by the Mayor as authorized by the Town Council. Prosperity provides electricity, water, sewer, and solid waste pickup for its residents.

The *Town of Silverstreet* was established originally as Shop Springs in 1837, changed to its present name in 1865, and was incorporated in 1910. Silverstreet is 3.35 square miles in size. The Silverstreet Town Hall is located on Main Street and also houses a Newberry County Sheriff's

station and a County EMS station. The Town is governed under a mayor/council form of government, with the mayor and four council members elected at-large for four-year terms.

The *Town of Whitmire* was incorporated in 1891 and is known by local residents as the “Pearl of the Piedmont.” Whitmire encompasses 1.26 square miles. The Town is governed by a mayor/council form of government, with the mayor and six council members elected at-large every two years for four-year staggered terms. The Whitmire Town Hall is located on Main Street. The Town also owns and operates the Community Center (formerly the Park Street School cafeteria), which is used for meetings and private functions. Whitmire provides police, sewer, water, and solid waste pick-up for its residents and employs 18 full time and 4 part-time employees.

7.1.3. Newberry County Boards and Commissions

The Newberry County Council appoints a total of 107 members to 15 boards and commissions that have oversight responsibility for issues ranging from making recommendations on expenditures generated by the accommodations tax to oversight of the County’s emergency services departments and organizations (Table 7-2).

Table 7-2. Newberry County Board and Commission Appointments

APPOINTED BOARD	APPOINTEES	COMPOSITION REQUIREMENTS	TERMS
Accommodations Tax Advisory Board	7	Council appoints majority from hospitality industry, at least 2 from the lodging industry, one representing funded cultural organizations	4 yrs.
Airport Commission	7	Council appoints one member from each district	4 yrs.
Board of Rescue Squads	9	Council appoints one member from each rescue squad district and 2 at-large members	4 yrs.
Board of Rural Fire Control	11	Council appoints one member from each main fire station	4 yrs.
Board of Zoning Appeals	7	Council appoints one member from each district	4 yrs.
Central Midlands Council of Governments	3	Council appoints 2 citizens and Council Chair appoints one elected official	3 yrs.
Disabilities and Special Needs Board	7	Council appoints one member from each district	4 yrs.
GLEAMNS Board	3	Recommended by the GLEAMNS Human Resources Commission, Inc. for Council approval, one representative each from the public and private and the served population	2 yrs.
Library Board	7	Council appoints one member from each district	4 yrs.
Newberry County Water and Sewer Board	7	Legislative delegation appoints one member from each district	6 yrs.
Newberry County Joint Planning Commission	12	Council appoints one member from each district and 5 at-large members, each participating municipality appoints one member	4 yrs.
Newberry County Memorial Hospital Board	15	Council appoints 14 members (two from each district) and the Hospital appoints one physician representative	4 yrs.
Piedmont Tech Commission	1	Council Appointment	4 yrs.

APPOINTED BOARD	APPOINTEES	COMPOSITION REQUIREMENTS	TERMS
Upper Savannah Workforce Development Board	4	Council Appointments	3 yrs.
Westview Behavioral Health Board	7	Council appoints one member from each district	4 yrs.

All jurisdictions in South Carolina that regulate land use, including Newberry County, must have a *planning commission* and a *board of zoning appeals*. Members of both bodies are appointed by the governing body of the jurisdiction covered – the county, city, or town council. The planning commission directs the development and update of the comprehensive plan and advises the governing body on the adoption of the plan. It also directs the preparation and update of land use regulations, including the zoning ordinance and land development regulations, and provides recommendations on the adoption of such regulations to the governing body.

The *Newberry County Joint Planning Commission* was re-established in 1997 to serve Newberry County, the City of Newberry, and the Towns of Prosperity, Whitmire, Little Mountain, Pomaria, Silverstreet, and Peak. However, the Towns of Silverstreet and Whitmire have not yet adopted a zoning ordinance. In 2003, the City of Newberry established a separate Planning Commission to serve its jurisdiction. The Joint Commission includes 11 members, with seven appointed to represent each Council district by the Newberry County Council and one member recommended to Council for appointment by each of the town councils of Prosperity, Little Mountain, Pomaria and Peak. All Planning Commission appointments are for a four-year term.

The role of the *Newberry County Zoning Board of Appeals* is quasi-judicial and includes considering appeals to determinations made by the Zoning Administrator, as well as hearing and ruling on applications for variance from the requirements of the Zoning Ordinance. The County Council appoints seven members – one from each Council District – for individual terms of four years.

Newberry County, in accordance with *S.C. Code section § 4-10-300*, has appointed a *Capital Projects Sales Tax (CPST) Commission* to consider and prioritize proposed capital improvement projects within the County or its municipalities that are to be funded by the one percent sales and use tax. The CPST consists of six members comprised of three County appointees and three Municipal appointees. Three appointments are made by the Newberry County Council, and per the statutory index, the City of Newberry is charged with making two of the three Municipal appointments. The two City Municipal appointees choose the third Municipal appointee, who must be a resident of a County municipality other than the City of Newberry. Once the Commission has considered and prioritized the capital projects submitted, County Council enacts an ordinance setting forth the priority in which the net proceeds are to be extended, and then formulates a referendum question regarding the Commission’s recommendations for inclusion on the ballot during the general election.

Twelve projects are included in the Capital Project Sales Tax November 2022 referendum, totaling more than \$37 million. If the referendum is approved by voters, the County will issue bonds to cover the project costs, with bond payments to be paid through penny sales tax collections. This will be the fifth time that Newberry County has implemented a CPST referendum. Newberry

County voters approved previous CPST referendums in 1998, 2004, 2010, and 2016. The 2022 CPST projects are discussed in detail in the *Priority Investment Element*.

7.1.5. State and Federal Facilities

A number of State and Federal facilities are located in Newberry County, with many State facilities located in the County seat in the City of Newberry. Major State and Federal facilities located within Newberry County are listed in Table 7-3.

Table 7-3. Federal and State Facilities in Newberry County

FACILITY	LOCATION
FEDERAL FACILITIES	
U.S. Postal Service - <i>Chappells, Kinards (P.O. boxes only), Little Mountain, Newberry, Peak, Pomaria, Prosperity, Silverstreet, Whitmire</i>	S.C. Highway 39, Chappells area Wheeland Road, Little Mountain U.S. Hwy. 76, Kinards area College Street, Newberry River Street, Peak U.S. Highway 176, Pomaria N. Main Street, Prosperity Main Street, Silverstreet Main Street, Whitmire
USDA Newberry Service Center - <i>U.S. Dept of Agriculture, Natural Resources Conservation Service, Rural Development Agency, Newberry Soil and Water Conservation District</i>	Kendall Road, Newberry
USDA Forest Service	Work Center Road, Whitmire
STATE FACILITIES	
Clemson University Cooperative Extension Service	Wilson Road, Newberry
National Guard of S.C. - <i>HQ 218th Infantry Brigade, National Guard Recruiter</i>	General Henderson Road, Newberry
Newberry County Commission on Alcohol & Drug Abuse – <i>affiliate of S.C. DAODAS</i>	College Street, Newberry
Newberry County Council on Aging – <i>affiliate of the S.C. Office on Aging</i>	Hunt Street, Newberry
Newberry County Disabilities & Special Needs - <i>affiliate of S.C. Department of Disabilities and Special Needs</i>	Nance Street, Newberry
Piedmont Technical College - Newberry Center	Wilson Road, Newberry
S.C. Department of Health and Environmental Control - <i>Newberry County Health Dept., Environmental, Family Planning and WIC</i>	Wilson Road, Newberry
S.C. Department of Health and Human Services - <i>Medicaid</i>	Wilson Road, Newberry
S.C. Department of Juvenile Justice	College Street, Newberry
S.C. Department of Mental Health - <i>Mental Health Services</i>	Medical Park Drive, Newberry
S.C. Department of Motor Vehicles	Mt. Bethel Garmany Road, Newberry
S.C. Department of Probation, Parole, and Pardon Services	College Street, Newberry
S.C. Department of Public Safety - <i>S.C. Highway Patrol</i>	Mt. Bethel Garmany Road, Newberry
S.C. Department of Social Services	Wilson Road, Newberry

FACILITY	LOCATION
S.C. Department of Transportation - <i>Engineering, Maintenance Shop</i>	Mt. Bethel Garmany Road, Newberry
S.C. Department of Vocational Rehabilitation	Evans Street, Newberry
S.C. Election Commission - <i>Voter Registration and Elections</i>	Wilson Road, Newberry
S.C. Employment Security Commission - <i>Newberry Workforce Center/OneStop Office</i>	Wilson Road, Newberry
S.C. Fire Academy - <i>Regional Office</i>	Wilson Road, Newberry
S.C. Forestry Commission - <i>Piedmont Regional Office, Fire Dispatch Center</i>	General Henderson Road, Newberry
S.C. Veteran's Affairs Office	Wilson Road, Newberry

7.2. Utilities

Like all communities, the vitality, growth and development pattern of Newberry County depends on a reliable and accessible network of public and private utilities and infrastructure. Utilities primarily include the provision of water, wastewater disposal, solid waste disposal, and electricity. Not only are these services essential for individuals, they are also vital to businesses and service providers and impact the long-term growth and development potential of the County and its municipalities. The availability of water and sewer is a factor in the suitability of an area for future development. Ready access effects the location and affordability of residential development and is a key factor weighed by business and industry in site selection.

7.2.1. Water Service, Treatment, and Distribution

Access to water service plays an important role in development location and density. Many businesses and industries require the reliability and access to water that only a public utility can provide. Residential development outside of water service areas must utilize wells, adding to the initial cost of each residential unit. Water service is provided to Newberry County residents by five community water systems, including four public water systems and one private system (Table 7-4). Community water systems serve the same population year-round. Seven transient, non-community water systems are more individualized. These systems can operate for a portion of the year (such as a school) or serve transient populations (rest stops, campgrounds, gas stations, etc.).

Table 7-4. Water Systems in Newberry County

WATER SYSTEM NAME	PRIMARY WATER SOURCE TYPE	AREA SERVED	POPULATION SERVED
COMMUNITY WATER SYSTEMS			
Boys Farm, Inc.	Ground water	Newberry	40
City of Newberry	Surface water	Newberry	9,573
NCWSA	Surface water	Newberry	9,910
Town of Prosperity	Surface water Purchased	Prosperity	1,292
Town of Whitmire	Surface water	Whitmire	2,256
TRANSIENT NON-COMMUNITY WATER SYSTEMS			
Dollar General Chappells	Ground water	Chappells	26
Gateway RV Park	Ground water	Pomaria	80

WATER SYSTEM NAME	PRIMARY WATER SOURCE TYPE	AREA SERVED	POPULATION SERVED
HJ Smith Properties	Ground water	Peak	26
Primo-Walmart 0624	Surface water purchased	Newberry	26
Riverwinds Landing	Ground water	Prosperity	26
Saluda River Resort	Ground water	Silverstreet	45
Three B Corner	Ground water	Pomaria	26

Source: Envirofacts Data Warehouse, Safe Drinking Water Information System, U.S. EPA, August 2022

The service area for the *Newberry County Water and Sewer Authority* (NCWSA), a special purpose district established in 1963, is the unincorporated area of the County. NCWSA is governed by a seven-member Board of Directors, with each member appointed by district by the Governor's office for six-year terms. NCWSA serves approximately 4,402 customers including 4,100 residential taps, 290 commercial taps, and 12 industrial taps. The Authority also provides water to customers in the Towns of Little Mountain, Pomaria, and Silverstreet and sells water to the Town of Prosperity for distribution of approximately 1,688 people through their water system. The Authority provides approximately 1.2 million gallons of drinking water to its customers each day, with a peak demand of 1.6 MGD. Water for NCWSA customers comes from two sources – surface water drawn from Lake Murray and treated at the NCWSA's Lake Murray Water Treatment Plant (LMWTP) and water purchased from the City of Newberry. The Lake Murray Water Treatment Plant was constructed in 2004 and has a treatment capacity of two million gallons per day (MGD). Capacity of the Plant at full build-out is 6.0 MGD. One MGD is available through NCWSA's purchase contract with the City.

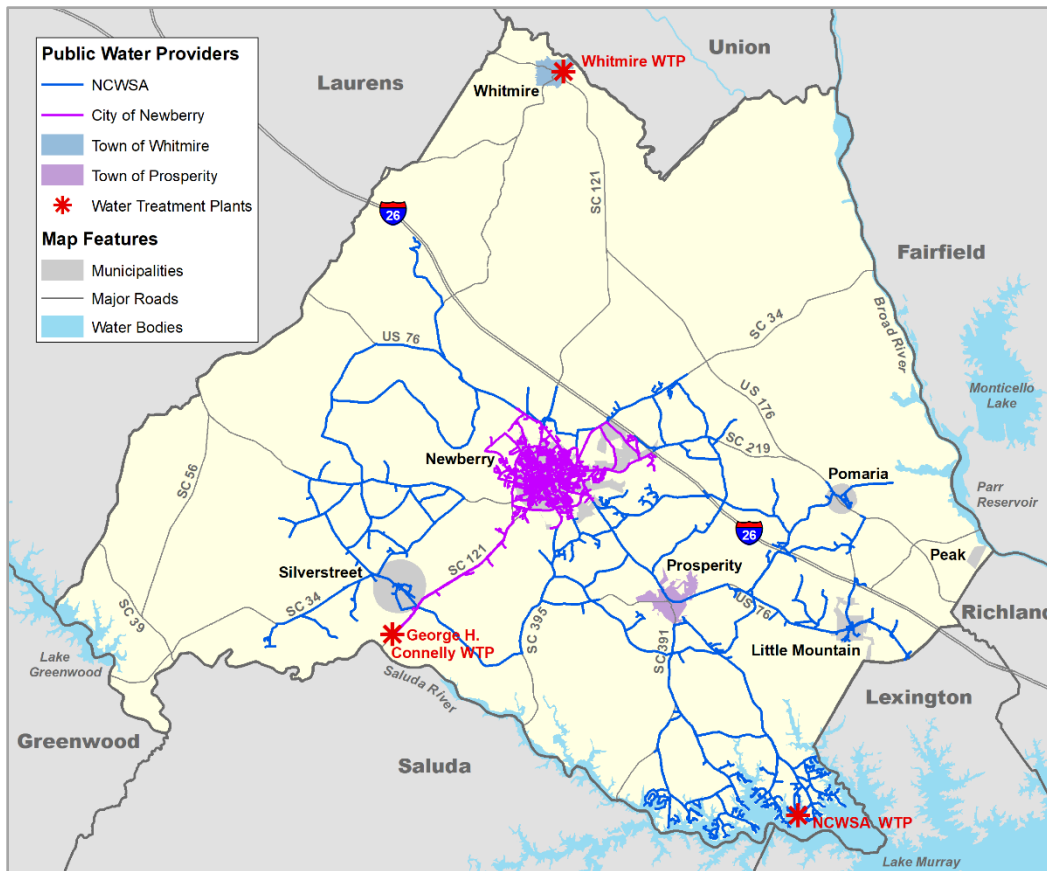
NCWSA owns and operates five pump stations, seven storage tanks with a total storage capacity of 3.6 million gallons of water, and 350 miles of water distribution mains. The Authority's highest priority water project is a planned capacity improvement will install a water transmission main from the Macedonia Pump Station to the distribution control tank. This project will increase deliverable capacity to two MGD capacity of the LMWTP and prepare for the build-out capacity of the facility at six MDG. The project has been submitted to the South Carolina Rural Infrastructure Authority for American Rescue Plan Act (ARPA) grant funding. Map 7-2 depicts current public water service and major water treatment plants.

The City of Newberry provides water service within the corporate limits and a surrounding service territory. The City of Newberry has approximately 4,608 water customers served by approximately 150 miles of water distribution pipes.

Raw surface water from the Saluda River is treated and converted to potable water at the George H. Connelly Water Treatment Plant, a facility owned and operated by the City of Newberry. Constructed in 1974 and significantly upgraded in 2016, the Plant has a treatment capacity of 8.1 MGD, with an average daily demand of 3.46 MGD. In addition to serving the needs of the municipal system, potable water produced at the facility is sold on a wholesale basis to the Newberry County Water and Sewer Authority (NCWSA) and the Town of Saluda.

Water storage to meet peak demand and fire flow requirements is provided via three elevated storage tanks with a combined capacity of 1.5 million gallons and a 3.5 million gallon ground water storage tank and pump station on Airport Road.

Map 7-2. Public Water Providers



Source: Newberry County GIS, September 2022

The City's Water Treatment Plant is located to the southwest near the Newberry County border, connecting to City water facilities via a line that runs along S.C. Highways 34 and 121. City water lines provide service to nearly all areas of the City and extend to unincorporated areas (Map 7-2).

The *Town of Whitmire* provides water to customers within the town limits. Water for the Town is drawn from the Enoree River and treated at the Whitmire Water Treatment Plant. Constructed in 1941, the Plant has a treatment capacity of 1 MGD, with an average daily demand of 0.75 MGD. However, the 2009 closing of the local Renfro Corporation Plant substantially decreased water usage in the Town of Whitmire. The textile manufacturer accounted for approximately 40% of the Town's total water usage.

The *Town of Prosperity* provides water to 622 customers within the Town as well as limited locations outside of Town. Prosperity purchases water that it distributes from the Newberry County Water and Sewer Authority. Water purchased by the Town from NCWSA is treated at their Lake Murray Water Treatment Plant.

7.2.2. Wastewater Collection and Treatment

The availability of sewer service is requisite for higher density residential development, educational and health care facilities, and the location or expansion of business and industry. Residential development outside of sewer service areas must utilize septic systems, adding to the

initial cost of each residential unit through installation, maintenance, and larger lot requirements. For most businesses and industries, the availability of sewer service is requisite for new facility location.

Access to sewer service in Newberry County is limited to areas served by four primary providers. The *City of Newberry* is the provider of wastewater treatment within the City as well as areas outside the City boundaries (Map 7-3). The City has approximately 3,992 wastewater customers. Newberry operates and maintains approximately 142 miles of gravity wastewater collection pipes and force mains that range in size from 4 to 30 inches in diameter. The system is supported by ten strategically located lift stations. Wastewater collected in the system is transported via the collection pipes to the Bush River Wastewater Treatment Plant for treatment using a modified activated sludge process. Constructed in 1980 and expanded in 2011, the Plant has a 5.0 MGD capacity and an average daily flow of 2.82 MGD.

The *Newberry County Water and Sewer Authority* (NCWSA) provides wastewater treatment for approximately 720 customers in the unincorporated area of the County and the Town of Prosperity. Of these, 650 are residential connections, 60 are commercial, and 10 are industrial connections. The system is primarily a force main system that utilizes 40 duplex pump stations to transport wastewater. NCWSA system wastewater is treated at the Cannons Creek Regional Wastewater Treatment Plant (CCWWTP) and the City of Newberry's Bush River Wastewater Treatment Plant. Treated water from the CCWWTP is discharged into Cannons Creek, which flows into the Parr Reservoir on the Broad River. The Cannons Creek WWTP was constructed in 2006 and has a treatment capacity of 0.95 MGD and an average daily flow of 0.300 MGD. The Authority's highest priority project is a wastewater capacity upgrade to the CCWWTP that will increase treatment capacity to 1.5 MGD and include an additional treatment basin and equipment, improved influent screening, and solids handling capabilities. The project is included in the 2022 Capital Projects Sales Tax (CPST) referendum. NCWSA is connected to the City's sewer treatment system at two points, with a combined capacity of 0.15 MGD.

The *Town of Whitmire* provides wastewater treatment to 986 customers within its borders. System wastewater is treated at the Whitmire Waste Treatment Plant and discharged into the Enoree River. The Whitmire Plant was constructed in 1975 and has a capacity of 1.0 MGD, with an average daily flow of 0.5 MGD.

The *Town of Prosperity* provides sewer collection for approximately 800 customers in town as well as a few limited locations outside of town. Wastewater treatment is provided at the Cannons Creek Regional Wastewater Treatment Plant. The 2010 Newberry County CPST funded an \$889,000 sewer improvement project to repair and update five aging lift stations and construct a new sewer pump station.

Wastewater treatment in Newberry County is primarily provided by three facilities classified by SCDHEC as "Municipal" public facilities – NCWSA's Cannons Creek Wastewater Treatment Plant (WWTP), the Town of Whitmire's WWTP, and the City of Newberry's Bush River Wastewater Treatment Facility. NCWSA's Bedford Way and Newberry Shores wastewater treatment plants also provide wastewater treatment and are classified by SCDHEC as "municipal" and "domestic"

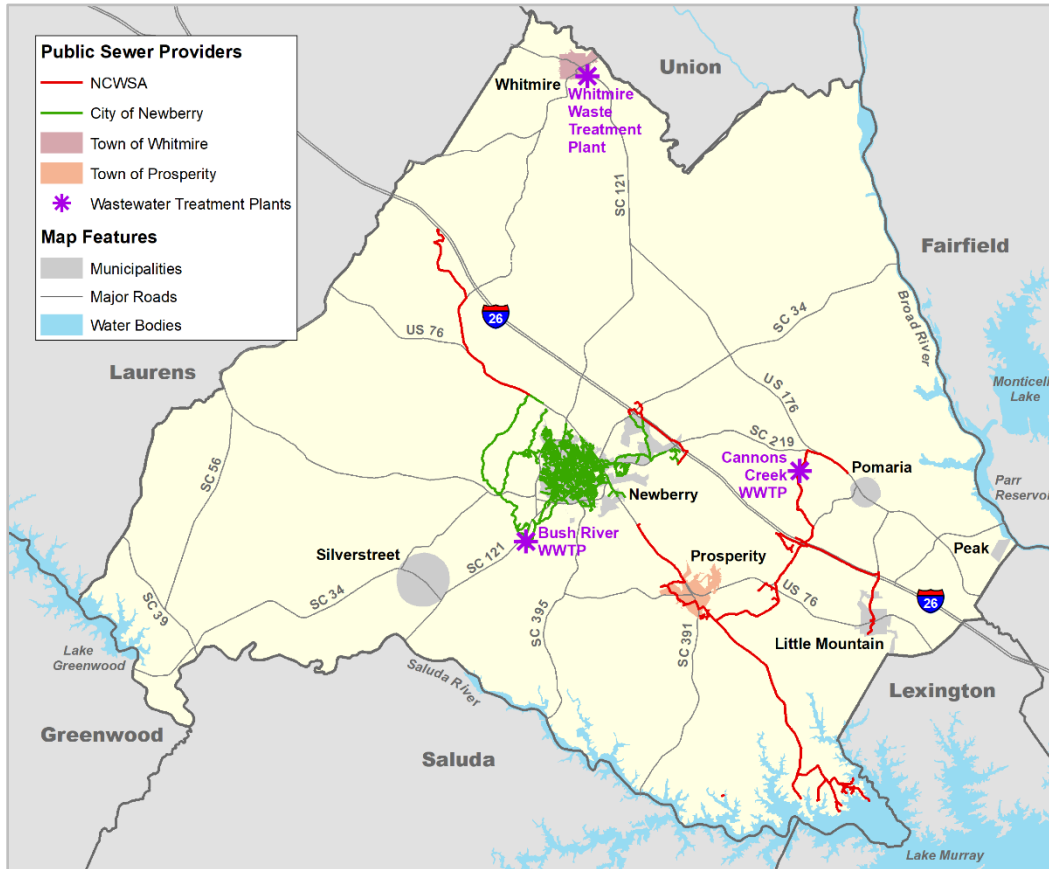
facilities, respectively. The ISE Newberry, Inc. industrial facility is also permitted to process and treat wastewater. Data on facility type, management agency, and treatment capacity for Newberry County wastewater management facilities is summarized in Table 7-5.

Table 7-5. Wastewater Management Facilities

FACILITY NAME	BASIN	FACILITY TYPE	MANAGEMENT AGENCY	DISCHARGE CAPACITY
Cannons Creek WWTP	Broad	Municipal	NCWSA	0.95 MGD
Newberry/Bush River WWTF	Saluda	Municipal	City of Newberry	5.1 MGD
Whitmire WWTP	Broad	Municipal	Town of Whitmire	1.00 MGD
Bedford Way WWTP	Saluda	Municipal	NCWSA	0.03 MGD
Newberry Shores WWTP	Saluda	Domestic	NCWSA	0.077 MGD
ISE Newberry Inc.	Saluda	Industrial	ISE Newberry Inc	not available

Sources: SCDHEC, S.C. Watershed Atlas, July 2022; City of Newberry, August 2022; CMCOG, September 2022

Map 7-3. Major Public Sewer Providers



Source: Newberry County GIS, September 2022

7.2.3. Energy Sources

Electricity is the primary source of energy for Newberry County residents, followed by natural gas (Table 7-6). Nearly two in three (65.2%) County homes are heated with electricity and more than one in four (25.9%) are heated with natural gas. Bottled, tank, or LP gas heats 4.8% of homes and 2.1% are heated with solar energy.

Table 7-6. Heating Fuels for Occupied Housing Units

HEATING FUELS	NEWBERRY COUNTY		SOUTH CAROLINA	
	#	%	#	%
ALL OCCUPIED HOUSING UNITS	14,976	100.0%	1,961,481	100.0%
Electricity	9,763	65.2%	1,401,910	71.5%
Utility (natural) gas	3,881	25.9%	445,638	22.7%
Bottled, tank, or LP gas	721	4.8%	70,278	3.6%
Solar Energy	316	2.1%	14,991	0.8%
Fuel oil, kerosene, etc.	200	1.3%	13,647	0.7%
Wood	17	0.1%	2,274	0.1%
Coal or coke	0	0.0%	541	0.0%
Other fuel	51	0.3%	1,961	0.1%
No fuel used	27	0.2%	10,241	0.5%

Source: U.S. Census Bureau, 2016-2020 ACS

7.2.3.1. Electricity Transmission and Distribution

Newberry Electric Cooperative (NEC) provides electricity to much of the unincorporated area of Newberry County. NEC was founded in 1940 as a member-owned, not-for-profit electric distribution utility based in the City of Newberry. The Cooperative serves more than 12,000 homes, businesses, and industries in the majority of Newberry County, as well as small areas along the county lines of Fairfield, Laurens, and Lexington Counties. NEC is one of 700 Touchstone Energy Partners, an alliance of electric cooperatives that together comprise the largest electric utility network in the country. The Cooperative obtains its power from Santee Cooper – South Carolina's state-owned electric and water utility. Santee Cooper directly serves more than 200,000 customers in Berkeley, Georgetown, and Horry Counties and distributes power through 20 electric cooperatives to customers in every county in the State. Approximately two million South Carolinians receive power directly or indirectly from Santee Cooper.

As an electric city, the *City of Newberry* is the provider of electric service within its corporate limits, except in areas where NEC or Duke Energy were serving existing customers at the time of annexation or where the City franchised NEC to provide electric service. The City of Newberry is a member of and obtains its supply of wholesale electric power from the Piedmont Municipal Power Agency (PMPA). PMPA is a non-profit, public utility that supplies electrical power, both directly and indirectly, for resale to its members. PMPA owns a 25% undivided interest in Unit 2 of the Catawba Nuclear Station, located in York County, South Carolina. Supplemental power to meet peak demands for members is furnished by contract through Santee Cooper. Duke Energy serves as wheeling agent for the transfer of electricity to the PMPA system, with the City receiving wholesale power at two delivery points. Electric service in the City is furnished to more than 4,951 customers through approximately 281 miles of primary conductor and 137 miles of secondary conductor.

The *Town of Prosperity* has provided electricity to customers within its borders for nearly five decades. The Town purchases electricity from Newberry Electric Cooperative to provide service for more than 600 residential and 125 commercial customers within the City limits.

Virginia-based *Dominion Energy* provides energy to nearly seven million customers. The Company provides electricity to 2.6 million homes and businesses in Virginia and North Carolina and more than 764,000 customers in South Carolina. Dominion purchased SCE&G and its parent company SCANA in 2019. The Dominion service territory stretches from the Lowcountry through the Midlands and to the Piedmont region of the Upstate. Dominion provides electrical service in several areas along the southern and eastern borders of Newberry County. Their largest service territory in the County includes an area ranging from Little Mountain to Pomaria and extending east from Pomaria to the county line at the Parr Reservoir. Dominion also serves a number of smaller areas along Lake Murray including Billy Dreher Island and the Chappells area in southwestern Newberry County.

Headquartered in nearby Charlotte, North Carolina, *Duke Energy* is a Fortune 500 company and one of the largest electric power companies in the United States. Duke Energy serves approximately 8.2 million customers in North and South Carolina, Ohio, Kentucky, Indiana, and Florida, of which approximately 800,000 customers are in South Carolina. The company also provides electricity to customers in the Midwest and natural gas distribution services in Ohio and Kentucky. The company operates coal-fired, nuclear, and hydroelectric stations. Duke Energy provides power to an area of Newberry County between the City of Newberry and the Town of Prosperity.

Laurens Electric Cooperative, Inc. is a member-owned, rural electric cooperative in Upstate South Carolina. Founded in 1939, the Cooperative provides service to more than 61,000 residential, commercial, and industrial consumers in Laurens, Greenville, Spartanburg, Anderson, Abbeville, Newberry, and Union counties. A member of Touchstone Energy Cooperatives, Laurens Electric Cooperative is owned by its members and operates as not-for-profit organization. The Cooperative serves areas along the western border of Newberry County in the vicinity of S.C. Highway 56 and Interstate 26.

Broad River Electric Cooperative, Inc. is a member-owned, rural electric cooperative headquartered in Gaffney. Founded in 1940, the Cooperative serves more than 18,500 business and residential customers in Cherokee, Spartanburg, Union, and Newberry counties in South Carolina, in addition to portions of Cleveland, Polk, and Rutherford counties in North Carolina. Broad River Electric Cooperative is a member of Touchstone Energy Cooperatives and provides electric service to areas along Maybinton, Tyger River, and Dogwalla Roads in the northeastern area of Newberry County.

Mid Carolina Electric Cooperative, Inc. (MCEC) is a member-owned, not-for-profit electric distribution utility headquartered in Lexington. MCEC is a member of Touchstone Energy Cooperatives and distributes electricity to more than 58,000 business and residential customers in Lexington, Richland, Saluda, Aiken, and Newberry counties. Mid Carolina provides electricity to an area between Little Mountain and Peak in southeastern Newberry County.

7.2.3.2. Natural Gas

The *Clinton-Newberry Natural Gas Authority (CNNGA)* is the primary provider of natural gas service in Newberry County. CNNGA is a Public Service District of the State of South Carolina and was created by the General Assembly through *Act 789* in 1952. The Authority is governed by a Board of Directors that includes the Mayor and two members each from the city councils of the

Cities of Newberry and Clinton, with a seventh at-large member appointed by the other six Board members. The Authority provides service to approximately 13,000 residential, commercial, and industrial customers in its service area, which includes all of Newberry County, much of Laurens County, and southern Spartanburg County.

7.2.3.3. Energy Conservation

Community facilities have substantial influence on energy usage and provide an effective arena for the introduction and implementation of local energy conservation measures. While most community facilities are provided and maintained by local governments, some facilities such as roads and educational centers are built and maintained by the state or federal government. Efforts to reduce energy consumption and mitigate rising energy costs have come to the forefront for many local governments and public institutions as they seek to operate within the confines of a limited budget. As high-profile energy consumers, these entities have a unique responsibility to promote energy conservation through energy efficient use within their operations. In addition to the significant energy cost savings that can be realized within public institutions, successful programs can also encourage private entities and citizens to conserve energy.

Local governments are among the leading energy consumers in a community. This is due in large part to the size of public buildings and facilities, coupled with the fact that such facilities are often older and less energy efficient. Local government conservation efforts can be made through policies and employee education, community facility site selection, building efficiency and site design, facility management practices, and fleet efficiency. Newberry County has submitted a grant to implement an upgrade to LED lighting and energy-saving temperature controls for six departments, with approval pending.

7.2.4. Internet Service

High-speed internet service is available within Newberry County from a number of providers including AT&T, Xfinity, HughesNet, Spectrum, EarthLink, Viasat, and T-Mobile Home Internet. In addition, mobile wireless services are available in the Newberry area from a wide range of carriers including Alltel, AT&T, Cricket Wireless, Spectrum, Sprint, T-Mobile, and Verizon Wireless. A number of local businesses and public facilities also have wireless internet (Wi-Fi) connection capabilities for their customers and employees, including Newberry County Memorial Hospital, the libraries in the Newberry County Library System, and local businesses, restaurants, and motels.

In 2020, the City of Newberry and partner WCFiber completed a citywide high-speed, fiber-optic network. The City funded construction of the network through gross revenue funds, which will be reimbursed from fiber-optic lease revenue. Initially planned as a three-year project, it was accelerated by the need to enable virtual work and school during the COVID-19 pandemic. The network was completed in 13 months, with 162 miles of fiber installed. The City oversaw construction of the project and will provide maintenance, while WCFiber provides internet service and an in-town office for customer service.

7.3. Stormwater and Flood Plain Management

Newberry County is actively involved in Stormwater Erosion and Sediment Control Management through the Delegated Review Program approved by the S.C. Department of Health and Environmental Control (SCDHEC), authorized pursuant to the provisions of *SC Code of Laws § 4-9-30* and *4-9-40* and *Title 48, Chapters 14* and *18*. The County's Erosion and Sediment Control Ordinance was adopted in 2005 and is administered by the Stormwater Manager/SCDHEC Certified Erosion Prevention & Sediment Control Inspector. The purpose of the Ordinance is to protect the general health, safety and welfare of the County and was enacted "to prevent the erosion of soils, to prevent the sedimentation of streams, to control stormwater runoff from developing areas, to reduce the damage potential of flood water, protect properties near land disturbing activities, to prevent the clogging of ditches, to prevent the silting of lakes, to provide unobstructed and sanitary channels for stormwater runoff, to prevent flooding caused by encroachment of buildings or other structures on natural waterways and drainage channels, to prevent pollution of surface water and groundwater, to promote groundwater recharge, and to preserve the natural scenic beauty of Newberry County for posterity."

Stormwater Management and Sediment and Erosion Control regulations apply to all land disturbing activities in Newberry County. A Stormwater Management and Sediment and Erosion Control Permit is required prior to all commercial and industrial construction, as well as the development of residential subdivisions. Land disturbing activities greater than one acre in size must also meet the requirements for a *National Pollutant Discharge Elimination System (NPDES)* General Permit, which is issued by SCDHEC. Issuance of NPDES permits is based upon the approval by the Newberry County Stormwater Manager of the Stormwater Management and Sediment Control Plans submitted for the project.

Residential land disturbing activities involving an individual lot or home site do not require a Stormwater Management and Sediment and Erosion Control Permit prior to construction, but must conform to the erosion and sediment control requirements for preventing any soil and sedimentation from leaving the site by using Best Management Practices (BMP's) such as silt fencing, mulching, temporary seeding, and/or a combination of such measures.

The Federal Emergency Management Agency (FEMA) manages the National Flood Insurance Program (NFIP). In South Carolina, the Flood Mitigation Office of the South Carolina Department of Natural Resources (SCDNR) administers the NFIP with financial support from FEMA. Nearly 20,000 communities across the United States and its territories participate in the NFIP by adopting and enforcing flood plain management ordinances to reduce future flood damage. In exchange, the NFIP makes federally backed flood insurance available to homeowners, renters, and business owners in these communities. Community participation in the NFIP is voluntary.

Flood plain management at the local level involves the operation of a community program of corrective and preventative measures for reducing flood damage. These measures take a variety of forms and generally include requirements for zoning, subdivision or building, and special-purpose floodplain ordinances.

Newberry County participates in the NFIP through the State program as a NFIP Certified Local Government. The Flood Management division of the County Planning and Zoning Department administers the flood plain management program in compliance with federal and State regulations for the unincorporated areas of the county. An explanation of flood plain designations and a detailed description and map of the flood plains within the County are included in the *Natural Resources Element* of the Comprehensive Plan.

7.4. Solid Waste

Newberry County has twelve solid waste collection centers located throughout the County. These centers accept only residential household waste, while residential or commercial yard debris (trees and vegetation) must be taken to the County’s mulch grinding facility on Public Works Drive in Newberry. Solid waste from the collection centers is transported to the County’s Transfer Station. Waste from the transfer station is transported and disposed in the Lee County landfill. Hours of operation for the collection centers are 8:00 a.m. to 6:00 p.m. (or 7:00 p.m. during daylight savings time) on Tuesday, Thursday, and Saturday and 2:00 p.m. to 6:00 p.m. on Sunday. Newberry County Recycling Centers are listed in Table 7-7 and depicted in Map 7-4.

Table 7-7. Solid Waste Recycling Centers

CONVENIENCE CENTER SITES	CENTER LOCATION
Newberry County Mulch Grinding Facility	270 Public Works Drive
Newberry County Transfer Station	11374 S.C. Highway 34
Bachman Chapel Site	397 Bachman Chapel Road
Beaver Dam Site	3296 Beaver Dam Creek Road
Broad River Road Site	10671 Broad River Road
Chappells Site	694 Brannon Road
Little Mountain Site	2788 Holy Trinity Church Road
Newberry Site	2790 Dixie Drive
Pomaria Site	321 Folk Street
Seibert Road Site	2733 Seibert Road
Silverstreet Site	4094 Werts Road
Stoney Hill Site	4570 St. Lukes Church Road
Whitmire Site	2293 S.C. Highway 66

Source: Newberry County, September 2022

The City of Newberry and the Towns of Prosperity and Whitmire provide solid waste collection service for their residents. Solid waste collection in the City of Newberry includes residential and commercial garbage collection, residential yard trash collection, and special pickups. The service is offered to all residences, businesses, and industrial facilities located within the corporate limits. While the City does not offer recycling service, recycling for residents may be done at the Newberry County recycling centers. Curbside solid waste collection is provided for City households once a week in conjunction with the use of a roll cart at each residence. Base level service consists of one roll cart collection per week for a monthly fee, with the option of obtaining additional containers for an additional user fee. Collection of shrubbery trimmings and limbs, seasonal pickup of leaves, and removal of furniture and appliances is also available on demand.

The City offers commercial solid waste service to all businesses in the City of Newberry. The base level of service is once per week collection, with the option of requesting additional service based on a combination of the number, size, and collection frequency of containers. Additional service is billed based on the volume of cubic yards collected. Solid waste collected by the City is delivered to the County's transfer station.

The Town of Prosperity collects residential waste one time per week using roll carts, with pickup of shrubbery and limbs scheduled by request. Commercial trash is picked up either once or twice a week. The Town of Whitmire collects solid waste from residences once a week and three days a week for businesses. Both Towns charge fees for trash collection for both residences and commercial uses. Solid waste collected by both Towns is transported to the Newberry County Transfer Station.

Map 7-4. Solid Waste Recycling Centers



Source: Newberry County, September 2022

7.5. Public Safety

The personnel, facilities, equipment, and services dedicated to protecting public safety and property are among the most essential community resources. A safe and secure environment that projects a climate of health, vitality, and community spirit for all residents is integral to building a strong community. Public safety is foremost in the minds of both elected leaders and their constituents, prompting most cities and counties to allocate sizable percentages of their annual

budgets to provide the level and quality of fire and police protection necessary for civic stability, security, and quality of life.

7.5.1. Emergency Preparedness

Although rare, Newberry County is vulnerable to various natural and man-made emergencies including tornadoes, thunderstorms, flash flooding, drought, wildfires, multi-vehicle accidents on I-26, and train derailments. Advance planning and preparation for such emergencies is essential in equipping community leaders, response staff, and the general public to make rapid and informed decisions that will save lives and quickly restore infrastructure and services when disaster strikes.

The Newberry County Department of Public Safety is the designated Disaster Preparedness Agency with responsibility for emergency and disaster planning for Newberry County. The County Emergency Operations Center (EOC) is the focal point of activity during an emergency – coordinating public safety, law enforcement, and recovery efforts with other key areas of County, municipal, and State government. An in-depth examination of hazard mitigation planning in Newberry County, the Central Midlands region, and the State is provided in the *Resiliency Element*.

7.5.2. Fire Service

Fire protection and prevention is of vital importance to every citizen and visitor in Newberry County and is one of the most fundamental and valuable services provided by local government. Volunteers work closely with the County's Department of Public Safety to provide fire protection and rescue services in Newberry County. Fire protection for the unincorporated area of the County and all of the municipalities, except for the City of Newberry, is provided by a fully volunteer force. This volunteer force is organized into 11 separate fire departments that are coordinated through the Board of Rural Fire Control.

7.5.2.1. Newberry County

The volunteer fire departments that comprise Newberry County's fire service are organized and work together through the Newberry County Board of Rural Fire Control. The Board's governing body includes representatives from each of the eleven departments and sets policies and procedures for the departments. In addition, the Board acts as a liaison between the fire departments and the Newberry County Council. While each volunteer fire department develops an annual operating budget request for the purchase and maintenance of equipment and facilities needs, the Newberry County Emergency Services Coordinator compiles the requests into a consolidated budget for presentation to County Council. Once approved, the Emergency Services Coordinator oversees equipment purchases and facilities upgrades for the departments. The Emergency Services Coordinator and his secretary are the only paid personnel involved in the provision of fire service in Newberry County. In addition to County funding, individual Fire Departments are supported to a large extent by private donations. More than 300 volunteer firefighters staff the 11 fire stations and eight substations located throughout the County. Table 7-8 provides a listing of the fire stations in Newberry County, including the station location and the numbers and types of vehicles housed at each station.

Table 7-8. Fire Stations

FACILITY NAME	ADDRESS	VEHICLES
CITY OF NEWBERRY		
Otis L. Whitaker Station	1041 Wilson Road, Newberry	4 engines, 1 service truck, 1 hazardous material response vehicle, 4 passenger/equipment vehicles
Public Safety Complex	1507 Nance Street, Newberry	
NEWBERRY COUNTY RURAL FIRE		
Belfast Substation	10032 Belfast Road, Kinards	2 engines
Bush River Station	5627 Bush River Road, Newberry	2 engines, 1 tanker, 1 brush truck
Chappells Station	3218 S.C. Hwy. 39, Chappells	1 engine, 1 tanker, 1 brush truck
Consolidated Station	3464 S.C. Hwy. 34, Pomaria	1 engine, 1 tanker, 1 brush truck
Counts Substation	2970 Jalapa Road, Kinards	1 engine, 1 tanker
Fairview Station	149 Seibert Road, Prosperity	1 engine, 1 tanker/pumper, 1 brush truck, 1 service truck
Friendly Station	919 Harrington Street, Newberry	2 engines, 1 tanker, 1 brush truck
Indian Creek Substation	19324 U.S. Hwy. 176, Newberry	1 engine
Little Mountain Station	219 N. Boundary Street, Little Mountain	2 engines, 1 tanker/pumper, 1 brush truck, 1 service truck
Maybinton Substation	296 Tyger River Road, Whitmire	1 engine, 1 tanker, 1 brush truck
O'Neal Substation	1350 Ira Kindard Road, Prosperity	1 engine, 1 tanker
Peak Substation	56 River Street, Peak	1 engine
Pomaria Station	241 Holloway Street, Pomaria	2 engines, 1 tanker, 1 brush truck
Prosperity Station	118 McNeary Street, Prosperity	2 engines, 1 tanker
Ray Leitzsey Substation	1163 Litzsey Road, Pomaria	1 engine
Silverstreet Station	1233 Main Street, Silverstreet	2 engines, 1 tanker, 1 brush truck
St. Phillips Station	166 Mudcreek Road, Newberry	1 engine, 1 tanker, 1 brush truck
Stoney Hill Substation	88 Harmon's Quarter Road, Prosperity	1 tanker/pumper, 1 service truck
Whitmire Station	136 Gilliam Street, Whitmire	2 engines, 1 tanker, 1 brush truck

Source: Newberry County Emergency Management, August 2022

7.5.2.2. City of Newberry

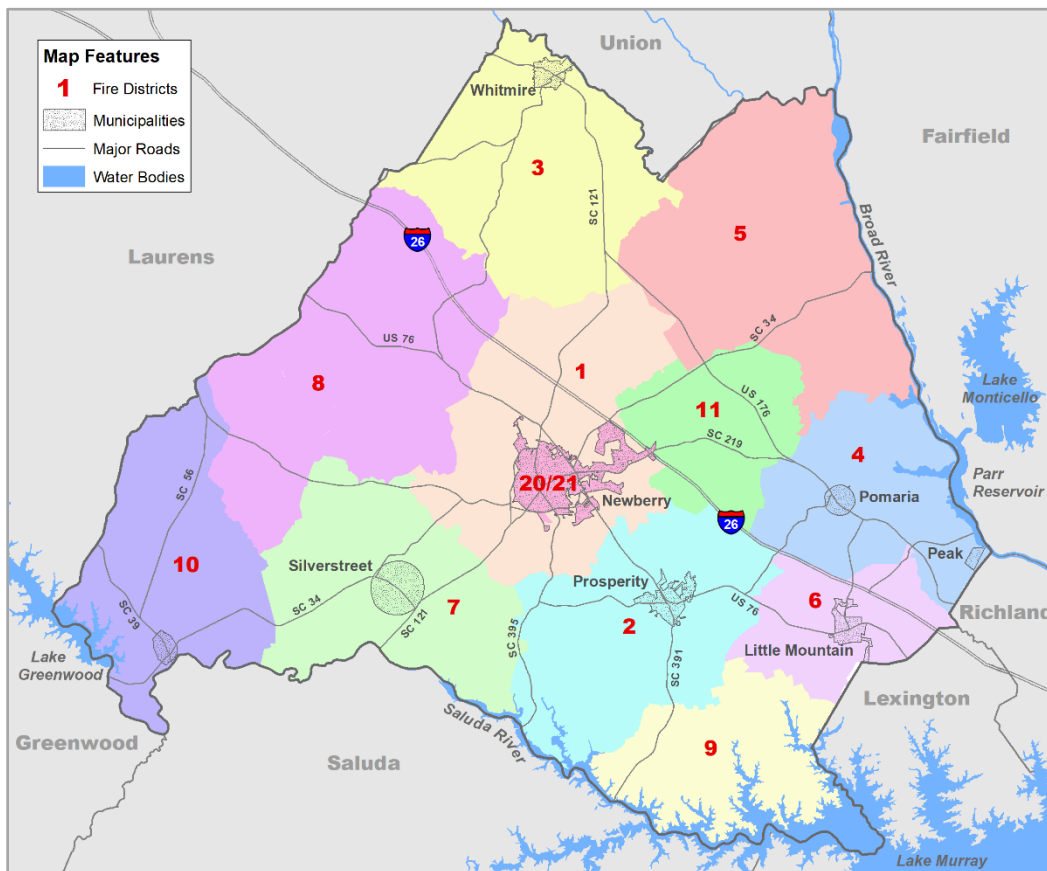
The *City of Newberry* provides fire service within the corporate limits of the City, as well as assistance to the County fire service in the unincorporated areas through mutual aid agreements. The City Fire Department was formed in 1873 and was originally housed in the lower level of the Newberry Opera House. The City of Newberry maintains two fire stations. The main station, the Otis L. Whitaker Fire Station, is located at 1041 Wilson Road and a second substation is in the Public Safety Complex at 1507 Nance Street. The Department employs 20 full-time certified fire fighters, including the Fire Chief, a recruitment/retention staff member, and an administrative assistant. Twenty-five volunteer fire fighter positions supplement all activities of the full-time staff, providing valuable assistance and resulting in significant savings for the City.

7.5.2.3. Insurance Services Office (ISO) Ratings

While the provision of adequate, state-of-the-art firefighting equipment and trained personnel is vital to the preservation of life and property, it also significantly impacts the cost of individual fire

insurance premiums in a community. Insurance companies use a classification system provided by the Insurance Services Office, Inc. (ISO) to determine the level of fire protection for each insured home. ISO is an independent statistical, rating, and advisory organization that collects and analyzes information on a community's public fire protection and assigns a public protection classification. Classifications range from 1 to 10, with Class 1 representing the best public protection and Class 10 indicating no recognized protection. Classification criteria include the effectiveness of the fire department in receiving and dispatching fire alarms, the number of fire stations, the availability and amount of water needed to fight fires, training provided to local fire fighters, and maintenance and testing of equipment. In addition, the distribution of fire stations and service throughout the community weighs heavily in the determination of the classification. Properties that are located more than five road miles from a fire station are not considered to have adequate fire protection and therefore receive higher ISO classifications. Since water availability for fire protection comprises 40% of the total ISO rating, areas served by municipal or other water services benefit from lower ISO ratings and ultimately, lower insurance rates.

Map 7-5. Fire Districts



Source: Newberry County GIS Department, September 2022

ISO ratings in Newberry County range from 2 in the County's most urban area to 7 in some of its more rural areas. Map 7-5 depicts the County Fire Districts and Table 7-9 lists ISO ratings for each fire district.

Table 7-9. ISO Ratings by Fire District

FIRE DISTRICT	ISO RATING
City of Newberry	2
Bush River	7
Chappells	6
Consolidated	5
Fairview	5
Friendly	5
Little Mountain	6
Maybinton Substation	5
O'Neal Substation	5
Peak Substation	6
Pomaria	6
Prosperity	6
Silverstreet	6
St. Phillips	6
Stoney Hill Substation	6
Whitmire	3

Source: Newberry County Emergency Management, August 2022

7.5.3. Law Enforcement

Efficient and effective law enforcement influences the quality of life in a community. Law enforcement in Newberry County is provided by the Newberry County Sheriff's Department and the police departments of the City of Newberry and the Towns of Prosperity and Whitmire. The locations of the Sheriff's headquarters and substations and those of the municipal police departments are provided in Table 7-11. A number of these stations are co-located with fire and EMS/rescue functions.

A total of 939 index crimes were reported in Newberry County in 2020 – a 6.5% decrease from the 1,004 index crimes reported in 2019 (Table 7-10). There are seven index offenses: murder, sexual battery, aggravated assault, robbery, larceny, breaking and entering, motor vehicle theft, and arson. Index offenses are categorized either as violent crimes (murder, sexual battery aggravated assault, and robbery) or property crimes (larceny, breaking and entering, motor vehicle theft, and arson). Violent crimes account for 24.1% of all index crimes in the County – higher than the 2019 percentage of 17.7%. The most prevalent violent crime in the County was aggravated assault, accounting for 83.1% of violent crimes. Three murders were reported in Newberry County in 2020. Nearly 76% of property crimes and 57.4% of all index crimes were categorized as larceny, which is the unlawful taking of property and includes offenses such as shoplifting, pocket-picking, purse snatching, and thefts from motor vehicles and of motor vehicle parts.

The index crime rate (rate per 10,000 residents) in Newberry County is lower than the statewide rates for similar crimes, with the exception of aggravated assault, which is 10.48 points higher

(Table 7-10). Primarily because of the higher aggravated assault rate, the overall index crime rate for violent crimes in the County is slightly higher than the State rate.

Table 7-10. Index Crimes Reported in Newberry County*, 2019 and 2020

INDEX CRIMES	2019		2020		RATE PER 10,000 POPULATION	
	#	%	#	%	COUNTY	S.C.
VIOLENT CRIMES	178	17.7%	226	24.1%	59.92	54.93
Murder	6	3.4%	3	1.3%	0.80	1.08
Sexual Battery	10	5.6%	12	5.3%	3.18	4.76
Aggravated Assault	148	83.1%	201	88.9%	53.29	42.81
Robbery	14	7.9%	10	4.4%	1.27	6.3
PROPERTY CRIMES	826	82.3%	713	75.9%	189.03	281.85
Larceny	650	78.7%	539	75.6%	142.90	206.67
Breaking & Entering	139	16.8%	131	18.4%	34.73	43.69
Motor Vehicle Theft	34	4.1%	41	5.8%	10.87	30.09
Arson	3	0.4%	2	0.3%	0.50	1.45
INDEX TOTAL	1,004	100.0%	939	100.0%	248.95	336.78

* Includes crimes reported by all law enforcement agencies in the County
 Source: S.C. Law Enforcement Division, *Crime in South Carolina, 2020*

7.5.3.1. Newberry County Sheriff

The Newberry County Sheriff's Office (NCSO) provides law enforcement in the unincorporated areas of the County and within all municipalities except for the City of Newberry and the Towns of Prosperity and Whitmire, which have their own police departments. However, the NCSO support and assists these three departments as requested and needed. The Sheriff's Department also provides emergency dispatching for all emergency services within the County, including E-911 services. The NCSO is headquartered at 550 Wilson Road in Newberry, with four substations located in the City of Newberry and the Towns of Prosperity, Little Mountain, and Silverstreet (Table 7-11). The Newberry County Detention Center located at 3239 Louis Rich Drive in Newberry is also under the jurisdiction of the Sheriff and is licensed to house 134 inmates, including prisoners of the County, municipalities, and State.

The Sheriff's Department employs 48 law enforcement officers, 32 detention officers, 14 full-time and four part-time telecommunications staff, and five civilian employees. The Department has cooperative agreements in place with all municipalities within the County as well as neighboring counties. Special programs provided by the Sheriff's Department include the Community Oriented Policing Services (COPS) program, which provides specialized outreach to the elderly, disabled and youth; the Victim's Assistance unit; the School Resource Officer (SRO) unit; court security; K-9 and bloodhound team; boat patrol; and mobile command center.

Table 7-11. Public Safety Locations

FACILITY NAME	ADDRESS
NEWBERRY COUNTY SHERIFF	
Sheriff's Office Headquarters	550 Wilson Road, Newberry
Fairview Substation	149 Seibert Road, Prosperity
Helena Substation	902 Giff Street, Newberry
Little Mountain Substation	206 Depot Street, Little Mountain
Silverstreet Substation	1233 Main Street, Silverstreet
Newberry County Detention Center	3239 Louis Rich Drive, Newberry
CITY OF NEWBERRY POLICE DEPARTMENT	
Police Department Headquarters (Public Safety Complex)	1507 Nance Street, Newberry
TOWN OF PROSPERITY	
Police Department Headquarters	250 School Drive, Prosperity
TOWN OF WHITMIRE	
Police Department Headquarters	95 Main Street, Whitmire

Source: Newberry County Sheriff's Office, City of Newberry Police Department, Town of Whitmire Police Dept., Town of Prosperity Police Dept., 2022

7.5.3.2. City of Newberry Police Department

The City of Newberry Police Department serves within the municipal boundaries and is headquartered in the City's Public Safety Complex at 1507 Nance Street. The Department employs 32 sworn police officers and five support personnel. The City's Police Department consists of Patrol and Investigative Divisions. *Patrol Division* duties include crime prevention patrol, traffic enforcement, suppression of disturbances, offender apprehension, call response, rendering of first aid, and preliminary investigations. The primary function of the *Investigation Division* is follow-up investigation of criminal offenses that occur within the jurisdiction of the City and the eventual identification, apprehension, and successful prosecution of criminal offenders. Department staff also includes a training lieutenant, narcotics investigator, juvenile/crime prevention sergeant, and a victim advocate.

7.5.3.3. Town of Prosperity Police Department

The Town of Prosperity's Police Department is headquartered at 250 School Drive in Prosperity. Law enforcement services are provided within the Town limits, as well as an additional 12 square mile area of jurisdictional authority. The Department employs one part-time and five full-time officers, supported with five patrol cars. Cooperative agreements are in place with the Newberry County Sheriff's Department and the City of Newberry. The Department also provides traffic coverage for Prosperity-Rikard Elementary School.

7.5.3.4. Town of Whitmire Police Department

Law enforcement within the Town of Whitmire is provided by the Whitmire Police Department, headquartered at 95 Main Street. Four full-time officers, two part-time officers, and one reserve officer are employed by the Department. The reserve officer serves on an as-needed basis.

Through an agreement with Newberry County, the Whitmire Police Department also provides law enforcement services within a three-mile area outside of the Town as needed.

7.6. Health Care

Access to quality health care is an essential component of community well-being. Building a healthy community ensures an acceptable quality of life for all residents and prevents costly problems that inhibit the realization of full individual, economic, and community potential. The health care system encompasses a broad continuum of care that begins with preventative care and progresses through end-of-life care. Public health is negatively impacted when service gaps are present in this continuum.

Newberry County is a federally designated *Medically Underserved* and a *Health Professional Shortage Area* (HPSA) for primary medical care and dental care among low income populations and for mental health care among all residents (SCDHEC, 2022). Shortage Areas are designated geographic areas, special populations, or facilities that have shortages of primary medical care, dental, or mental health providers. The number of practicing health professionals serving Newberry County is detailed in Table 7-12.

Table 7-12. Selected Practicing Health Professionals in Newberry County

HEALTH PROFESSION	NUMBER
PHYSICIANS	37
Family Practice	15
Internal Medicine	4
Obstetrics/Gynecology	1
Pediatrics	3
General Surgery	2
All Other (Specialists)	12
NURSES	284
Registered Nurses	191
Certified Nurse Midwives	0
Nurse Practitioners	17
Nurse Anesthetists	1
Licensed Practical Nurses	85
OTHER HEALTH PROFESSIONS	88
Dentists	11
Pharmacists	30
Physical Therapists	22
Occupational Therapists	8
Physician Assistants	3
Optometrists	0
Respiratory Care Practitioners	14

Source: South Carolina Health Professions Data Book, S.C. Office for Healthcare Workforce, 2021

Key health care centers are listed in Table 7-13 and include the Newberry County Memorial Hospital, the County Health Department, the Free Medical Clinic, EMS stations, and rescue squads. These health care services are profiled in the following sections.

Table 7-13. Health Care Centers, EMS, and Rescue Squads

FACILITY NAME	ADDRESS	VEHICLES
HEALTH CARE CENTERS		
Newberry County Memorial Hospital (NCMH)	2669 Kinard Street, Newberry	NA
Free Medical Clinic of Newberry County	2568 Kinard Street, Newberry	NA
Newberry County Health Department	2111 Wilson Road, Newberry	NA
NEWBERRY COUNTY EMS		
Central EMS Station (behind NCMH)	2603 Evans Street, Newberry	24-hour ambulance
Indian Creek Station	19324 U.S. Highway 176, Newberry	12-hour ambulance
Fairview EMS Station	149 Seibert Road, Prosperity	24-hour ambulance
Silverstreet EMS Station	1233 Main Street, Silverstreet	2-hour ambulance (daytime)
NEWBERRY COUNTY RESCUE SQUADS		
Chappells Rescue Squad	3218 S.C. Highway 39, Chappells	ambulance, rescue truck, QRV
Lake Murray Rescue Squad	149 Seibert Road, Prosperity	ambulance, rescue truck, ATV
Little Mountain Rescue Squad	219 North Boundary Street, Little Mountain	ambulance, rescue truck, QRV, boat, ATV
Newberry Rescue Squad	2327 Adelaide Street, Newberry	ambulance, rescue truck, boat, ATV, QRV
Pomaria Rescue Squad	231 Holloway Street, Pomaria	ambulance, 2 rescue trucks, 2 boats, ATV, QRV
Prosperity Rescue Squad	118 McNeary Street, Prosperity	ambulance, rescue truck, QRV, 2 boats
Whitmire Rescue Squad	26350 S.C. Highway 121, Whitmire	2 ambulances, 2 rescue trucks, boat, ATV, QRV

Source: Newberry County Emergency Services, August 2022

7.6.1. Emergency Medical Services

Emergency Medical Services (EMS) provide direct and responsive, rapid pre-hospital medical care to individuals in need of assistance, serving as the critical first link in the trauma care continuum that begins with pre-hospital care and access. Pre-hospital medical care is necessary for incidents as varied as automobile accidents, heart attacks, drowning, childbirth, and gunshot wounds.

Emergency medical care is provided by the Newberry County EMS and through seven volunteer Rescue Squads. Ambulances are deployed from four EMS stations and seven Rescue Squad stations. The EMS and Rescue Squads work together to ensure the best possible response to emergency situations. Table 7-13 lists Newberry County EMS and Rescue Squad station locations.

7.6.1.1. Newberry County Emergency Medical Services (EMS)

Newberry County Memorial Hospital operates Newberry County Emergency Medical Services (EMS) for all areas of the County, working to ensure efficient, quality emergency medical care to County residents and visitors. The Newberry County EMS deploys four ambulances from four stations located throughout the County.

Newberry County EMS employs 36 staff, with Emergency Medical Technicians manning one 24-hour truck deployed from the Evans Street station, one truck housed during the day (12 hours) at the Silverstreet station, one 24-hour truck housed at the Fairview station, and one 24-hour truck housed at the Indian Creek station. Each ambulance is fully equipped for all emergencies, with service available seven days a week. In addition, EMS has a non-urgent ambulance that provides service to area nursing homes and physician offices. A listing of each EMS Station, including the location and vehicles housed at each, is provided in Table 7-13.

Dispatching, including Enhanced 911 (E-911) service, for Newberry County EMS operates out of the Newberry County Sheriff's office, as does dispatching for all public safety calls in the County. EMS medical personnel observe State field triage protocol, with the goal of assuring the patient receives the appropriate level of care. When appropriate, patients are transported to the regional trauma care center. The Central EMS station is located on Evans Street in the City of Newberry, behind the Newberry County Memorial Hospital. The Newberry County EMS receives approximately 5,500 calls per year.

7.6.1.2. Rescue Squads

Emergency medical services are also provided throughout Newberry County by seven volunteer Rescue Squads. The Rescue Squads are individually organized and coordinated through the Newberry County Board of Rural Rescue Squads. As with the Board of Rural Fire Control, the Board of Rural Rescue Squads includes representatives from each of the seven Rescue Squads. The Board sets policies and procedures for all of the squads and also acts as a liaison between the Rescue Squads and the Newberry County Council. While each individual rescue squad develops an annual operating budget request for the purchase and maintenance of equipment and facility needs, the Newberry County Emergency Services Coordinator compiles the requests into a consolidated budget for presentation to County Council. Once approved, the Emergency Services Coordinator oversees equipment purchases and facility upgrades for the Rescue Squads. In addition to funding provided by Newberry County, individual rescue squads are supported by private donations.

More than 180 Rescue Squad volunteers staff the County's seven Rescue Squad stations. While all individual rescue squads and fire stations are operated separately in Newberry County, some are co-located. An ambulance and a rescue truck are housed at each Rescue Station, with two ambulances stationed at the Whitmire Rescue Squad. A listing of each Rescue Squad, including location and a listing of vehicles at each station, is included in Table 7-13.

7.6.1.3. Newberry County Memorial Hospital

Newberry County Memorial Hospital (NCMH) is licensed for 90 acute care beds. Founded in 1925, the Hospital is ranked among the top 10 percent nationally for quality patient care and has grown

to accommodate changing community health needs over the years. The Hospital and staff offer a full range of inpatient and outpatient community medical services including surgical services, cardiac and pulmonary rehabilitation, obstetrics, orthopedics, respiratory and physical therapy, wound care, oncology, diagnostic imaging/radiology, and rehabilitation and wellness programs. Emergency room services are available on a 24-hour, seven days per week basis. NCMH also operates County EMS services. The Hospital is located on Kinard Street in the City of Newberry.

Other major health facilities offering additional specialized health care are located in neighboring Richland County at Prisma Health Richland Hospital (including a Level I Trauma Center and Children's Hospital) and Providence Health (widely known for acute care and the Heart and Vascular Institute). Lexington Medical Center also offers a range of services including surgery, imaging, birth center, and 24/7 emergency care.

7.6.1.4. Public Health

The *Newberry County Public Health Department* is located on Wilson Road in the City of Newberry. The Health Department provides a wide range of health related services including immunization; family planning; treatment and counseling for sexually transmitted diseases; and food products, health screenings, and health information for women, infants, and children aged five years or younger through the Women, Infants and Children (WIC) program.

7.6.1.5. Free Clinic

Founded in 2004, the Free Clinic of Newberry County provides professional health care to County residents who would not otherwise have access to medical services due to a lack of funds or adequate health insurance. As a non-profit organization, the Free Clinic is staffed by volunteers from the health professions community including physicians, dentists, and nurses, as well as volunteer support personnel. Since its opening in 2004, the Clinic has provided care for more than 850 Newberry County residents. The Free Clinic is located on Kinard Street in Newberry, directly across from the Newberry County Memorial Hospital.

Services provided by the Clinic include medical needs assessments, on-site treatment or referrals, access to dental care, free prescriptions for common medications including antibiotics, and wellness education. Volunteers from the Department of Social Services (DSS) are also available to provide free assessments and information on family planning, food stamps, and resources to obtain adequate housing and heating. To qualify for services at the Free Clinic, patients must be a Newberry County resident, earn below 140% of the Federal Poverty Level (per the current U.S. Department of Health and Human Services income guidelines), and lack Medicaid, Medicare, or any type of health insurance. Services for eligible residents are provided by appointment on Monday and Friday from 9:30 am to noon and Tuesday, Wednesday and Thursday from 9:30 am to 3 pm.

7.7. Social Services

There is a strong relationship between the condition of a community and the condition of its residents as the presence of a strong, productive, healthy, and caring citizenry enhances the

livability of Newberry County. Human investments in the form of social services target the special needs of individuals and groups. Effective social service delivery systems are designed to provide information and access to services, as well as link residents with agencies and programs that can meet their needs. The State of South Carolina provides a variety of health and social services to its citizens through regional and county delivery networks. Newberry County residents have convenient access to most of these services through local offices.

The *S.C. Department of Disabilities and Special Needs (SCDDSN)* serves persons with mental retardation, autism, head and spinal injury, and related conditions. Their mission is to "assist people with disabilities in meeting their needs, pursuing their individual possibilities and achieving their life goals, and minimize the occurrence and reduce the severity of disabilities through prevention." The Disabilities and Special Needs Board of each County serves as the single planning and service coordination point for all services funded by DDSN. The *Newberry Disabilities and Special Needs Board* office is located at 115 Nance Street in the City of Newberry and serves more than 300 individuals in the County with intellectual and related disabilities. The local DSN board is responsible for developing a local service plan and supervising service coordination either through direct delivery of services or arrangement with other community organizations. Through this system, residents with disabilities and special needs are able to remain in their own homes or, if not an option, to live in a family-like setting within their home communities.

The mission of the *S.C. Department of Health and Environmental Control (SCDHEC)* is to "promote and protect the health of the public and the environment." In addition to its health services, the *Newberry County Health Department* provides social work services and referral to other State programs.

The *S.C. Department of Mental Health* assists citizens with mental disorders in improving the quality of their lives. This mission is accomplished in partnership with consumers, families, and their diverse communities. The Department provides services to approximately 100,000 patients per year, 30,000 of whom are children, through its 16 community mental health centers, three licensed hospitals (one for substance abuse treatment), and four nursing homes. The Beckman Center for Mental Health Services is located in the City of Greenwood and provides services for Abbeville, Edgefield, Greenwood, Laurens, McCormick, Newberry, and Saluda Counties. Services provided through the Beckman Center include emergency and screening services; day treatment; consultation, education, and prevention; inpatient services; child and adolescent services; elderly services; outpatient services; alcohol and drug abuse services; community support programs; intensive case management; supported employment programs; living skill programs and various outreach programs. Local mental health services are provided by the Beckman Center's Newberry Mental Health Clinic located in the City on Medical Park Drive. Community health clinics such as the Newberry Mental Health Clinic are primary entry points into the S.C. Mental Health System, providing initial evaluation, assessment, intake of clients, short-term outpatient treatment, and continuing support services.

The *S.C. Department of Social Services (DSS)* seeks to provide protective and other services to children and adults who cannot protect themselves and to provide job training and other needed services to help South Carolinians who can work to become self-sufficient. The Department is

responsible for providing protective services for children and vulnerable adults; adoption and foster care services; administration of the SNAP/TANF (food stamp) program; licensing of childcare providers and residential group homes; child support enforcement; and children, family, and other support services. The Newberry County DSS office, located at 2107 Wilson Road in the City of Newberry, provides childcare licensing, child protective and prevention services, provision and monitoring of foster care, and family violence prevention and counseling.

The *Newberry County Office of Veterans Affairs*, located at 1856 Wilson Road in the City of Newberry, assists veterans, their widows, and survivors in applying for any and all benefits to which they may be entitled from the U.S. Department of Veterans Affairs, the State of South Carolina, the VA Hospital, and local agencies. Assistance includes research, preparation, development, presentation, and prosecution of claims submitted to the U.S. Department of Veterans Affairs and the Board of Veterans Appeals.

7.8. Services for the Elderly

The nation's expanding elderly population will affect every segment of the social, political, and economic landscape. Significant changes in living patterns and conditions often accompany the aging process. The health and functional status of seniors is of growing interest with implications for public policy, health care, and long-term care costs. With projected increases of frail elderly, there will be an increased need for home care and institutional and community-based acute care and long-term care. The numbers of persons suffering from dementia and Alzheimer's disease is also projected to grow dramatically in the coming decades, while the costs of care continue to rise. The time and resource demands on informal caregivers such as family and friends in the community will concurrently increase.

Nearly one-fifth (19.8%) of Newberry County residents (7,573 persons) are aged 65 or older. This is higher than the 17.7% of individuals in this age group statewide (*U.S. Census Bureau, 2020 Census*). The attractiveness of the Newberry area to retirees, coupled with an aging population led by the last of the baby boomers, will fuel a growing local need for specialized services for the elderly in coming years. Services for elderly residents are coordinated regionally but are primarily delivered by local providers in the City of Newberry area.

7.8.1. Area Agency on Aging

A majority of aging services are federally funded through the *1965 Older Americans Act*. This law requires designated service districts plan and implement aging services. To that end, the Lieutenant Governor's Office on Aging has divided the State into ten planning and service districts. The Central Midlands Council of Governments was designated as the Midlands Area Agency on Aging (AAA) in 1976 with responsibilities that include planning and oversight of programs and services for the elderly residents of Fairfield, Lexington, Newberry, and Richland Counties. The COG is assisted by a Regional Aging Advisory Committee, comprised of older individuals or individuals who are eligible to participate in *Older Americans Act* programs, representatives of older persons, and the general public. AAA programs and services are carried out by local service providers at the county level, with funding priority given to group dining, home delivered meals,

home care, and transportation. State funds are allocated to local agencies on aging based on a multi-factored formula that includes an equal base amount, with additional funding for the percent of population aged 60 and above living below poverty, percent of minority population over the age of 60, percent of population who are moderately or severely impaired, and percent of rural population.

7.8.2. Newberry County Council on Aging

The Newberry County Council on Aging (NCCOA) is the primary provider of services to senior citizens countywide. NCCOA is a private, non-profit organization established in 1970 to provide necessary services for Newberry County older adults that will allow them to gracefully age-in-place. The mission of NCCOA is to holistically enhance the quality of life for Newberry County senior citizens through a comprehensive, focal-point service delivery system.

NCCOA operates three senior centers in Newberry County. The Waldrop Senior Center is located at 1300 Hunt Street in the City of Newberry, the Baker Senior Center is at 310 Main Street in Whitmire, and the Little Mountain Senior Center is at 16 Depot Street in Little Mountain. These centers provide social support, health screening, recreation, activities, and nutritious lunches to persons 60 years of age or older. In addition to the Centers, NCCOA provides other services to the elderly residents of Newberry including:

- The NCCOA *Meal on Wheels* program delivers hot, nutritionally balanced meals to homebound seniors within the City of Newberry each weekday.
- *Newberry Senior Housing* at 1306 Hunt Street in downtown Newberry offers 35 senior living units that include modern appliances, central air conditioning, and open spaces in a convenient location. Because the property received funding in part through a Low Income Housing Tax Credit, a percentage of the units must be set aside for very low or low income households. Rents for these units are also capped.
- A registered nurse provides *Home Care* for frail, chronically ill, or disabled older individuals that includes assistance with light housekeeping, shopping, meal planning, and non-medical personal care.
- *Adult Day Health Care* is offered Monday through Friday from 8 a.m. to 5 p.m. at the Dave C. Waldrop, Jr. Senior Center to provide specialized assistance for Alzheimer's disease and related dementias, developmental disabilities, and short-term respite.
- Led by a certified Arthritis Foundation Exercise Instructor, the *Health and Wellness* program is designed to improve self-esteem and self-image through increased physical activity, improve/maintain physical abilities, decrease depression, and improve participants' daily living activities. The program is provided at the Whitmire Senior Center on Monday, Wednesday, and Friday at 10:30 a.m. and at the Waldrop Senior Center on Monday and Wednesday at 1:30 p.m.
- Transportation to the County's three Senior Centers and to non-emergency medical services are available by appointment for Newberry County seniors. Trips within the

County are only \$2.00 for the round trip and round trips to senior centers are \$0.25. The cost of longer trips varies according to the destination and purpose.

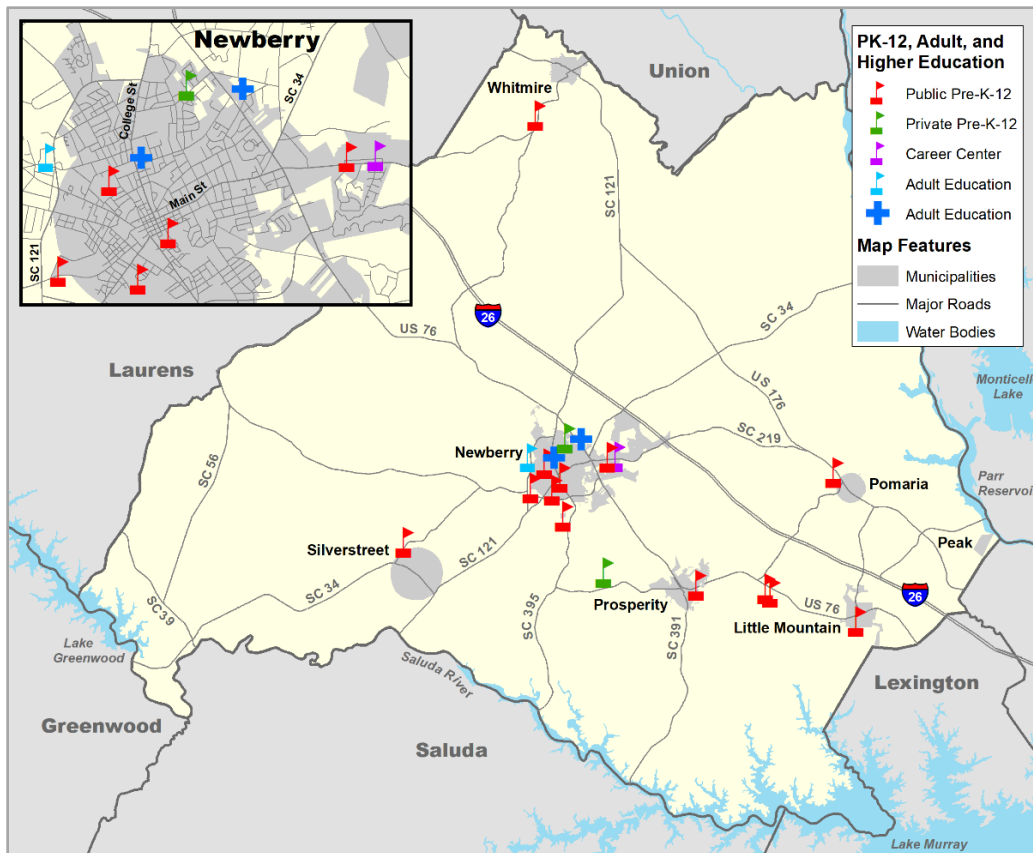
7.8.2. Nursing Homes and Assisted Living Facilities

As detailed in the Housing Element, there are two nursing homes in Newberry County that provide a total of 264 beds. The J.F. Hawkins Nursing Home in Newberry provides 118 beds and White Oak Manor in Newberry provides 146 beds. The County has three assisted living facilities providing a total of 95 units. Open Arms Community Care in Little Mountain includes 15 units, Southside Residential Care, Inc. in Prosperity includes 30 units, and Springfield Place Residential Care in Newberry includes 50 units. These housing options are detailed in Table 3-26 of the *Housing Element*.

7.9. Education

Education is a lifelong process in which a foundation of basic education through the pre-K-12 system is followed by an on-going individualized pathway of higher education, workforce development, and advanced career training opportunities. Communities that promote a philosophy of lifelong learning among residents are better positioned to successfully compete in a global economy. The average American worker now changes jobs five times or more over a working lifetime, making access to advanced workforce training programs an integral component of community and individual economic sustainability.

Map 7-6. PK-12, Adult, and Higher Education Facilities



Locations of public and private educational institutions are shown on Map 7-6 and include Newberry College, Piedmont Technical College, Pre-K-12 public schools, Newberry Academy, Newberry Christian Academy, the Newberry County Career Center, and Newberry Adult Education. These educational institutions and facilities are profiled in the following sections.

7.9.1. School District of Newberry County

The School District of Newberry County provides educational services to 5,760 students in grades pre-K through 12, with an annual budget that exceeds \$64.8 million in FY 2022-2023. The District employs more than 440 teachers and 350 administrators and support staff. South Carolina Department of Education report card data indicate the District has the 36th largest enrollment among the State's 81 districts. The District spent \$8,701 per pupil in FY 2019-2020, an increase from the previous year's expenditure of \$8,311.

The District operates a total of seven elementary, two middle, and two high schools. In addition, the Whitmire Community School serves students in pre-K-12. The Newberry Career Center and the Newberry Alternative School serve high school students in grades 9 through 12. Table 7-14 provides school enrollment data for FY 2020-2021.

Table 7-14. Enrollment in Newberry County Public Schools, 2020-2021

SCHOOL	ENROLLMENT
ELEMENTARY SCHOOLS (GRADES PK-5)	2,804
Boundary Street Elementary	471
Gallman Elementary	442
Little Mountain Elementary	392
Newberry Elementary	427
Pomaria-Garmany Elementary	323
Prosperity-Rikard Elementary	374
Reuben Elementary	135
Whitmire Community School	240
MIDDLE SCHOOLS (GRADES 6-8)	1,237
Mid-Carolina Middle	552
Newberry Middle	685
HIGH SCHOOLS (GRADES 9-12)	1,440
Mid-Carolina High	754
Newberry High	686
OTHER SCHOOLS	
Newberry Alternative School	50 est.*
Newberry County Career Center (grades 9-12)	n/a*
Whitmire Community School (grades 6-12)	279
SCHOOL DISTRICT OF NEWBERRY COUNTY - TOTAL	5,760

* Not included in the State's District total. Career Center serves students from all three high schools
 Source: S.C. Department of Education, School Report Cards 2020-2021, 2022

7.9.2. Private Schools

There are two private schools in the County – Newberry Academy and Newberry Christian Academy. Accredited by the S.C. Independent School Association, *Newberry Academy* opened in 1966 and has an enrollment of 267 students in grades 2K through 12 (*Newberry Academy, September 2022*). Newberry Academy is located at 2055 Smith Road in the City of Newberry. Newberry Christian Academy was established in 1986 and provides instruction for 28 students in grades pre-K through 12 in a Christian environment (*privateschoolreview.com, 2022*). Newberry Christian Academy is located at 2004 Colony Church Road in Newberry.

7.9.3. Adult Education and Literacy

The *Newberry County Adult Education* program offers out-of-school adults aged 18 and older an opportunity to earn a high school diploma or GED. The program is located on McSwain Street. The *Newberry County Literacy Council* has served the County for four decades to improve the literacy skills of Newberry residents. The Council offers tutoring and instruction in skills that are essential to functioning in a job and in society, as well as other programs to help individuals reach their literacy goals.

7.9.4. Higher Education

The County is also home to two postsecondary institutions, Newberry College and Piedmont Technical College. These institutions provide Newberry residents and employers with greater access to cultural and recreational events, research resources, meeting and conference facilities, and distance education opportunities. A number of other public and private institutions of higher learning are located within commuting distance for County residents in the nearby cities of Columbia, Clinton, and Greenwood.

7.9.4.1. *Newberry College*

Newberry College is a four-year, private liberal arts institution located in heart of the City of Newberry. The College was originally established in 1856 by the Lutheran Synod of South Carolina, an affiliation that continues with the S.C. Synod of the Evangelical Lutheran Church of America. The 90-acre campus is home to more than 30 academic, administrative, athletic, and residential buildings and facilities that serve nearly 1,143 students. There are 71 full-time and 41 part-time faculty (NCES, 2022). Full-time students are required to live on campus in one of the College's eight residence halls, with a ninth 104-bed residence hall slated for completion in 2023.

Newberry College is also an integral part of the Newberry community, with many of the College's faculty and staff also residents of the County. Newberry County residents also take part in numerous cultural events including concerts, plays, art exhibits and lectures, and sporting events held at the College each year. The College athletics program includes 18 NCAA Division II teams for men and women. The Physical Education Complex is home to the 1,600-seat Eleazer basketball arena, racquetball courts, a stress lab, offices, and classrooms. Other athletic facilities include lighted tennis courts, a 4,000-seat football stadium, an outdoor swimming pool, and soccer, softball, and baseball fields. In addition to the Wessels Library and the 1,000-seat Wiles Chapel,

the Alumni Music Center houses a 150-seat recital hall, practice rooms, a band room, offices, and classrooms. Many local groups use the College's academic and athletic facilities for special events such as statewide band competitions, conferences, conventions, and athletic camps.

7.9.4.2. *Piedmont Technical College*

Founded in 1966, Piedmont Technical College (PTC) is one of 16 public, two-year colleges that comprise the S.C. Technical Education System. The College serves a seven-county service area from its main campus in Greenwood and a network of satellite campuses in the six surrounding counties. The total PTC enrollment is 6,370 students in credit, high school dual enrollment, and continuing education programs. PTC employs 113 full-time and 169 part-time faculty. Students at the Newberry Campus account for 12% of PTC's curriculum and 50% of continuing education credit hours. The Newberry Campus enrollment consists of 689 students in credit programs, 114 in dual enrollment courses, and 876 residents in continuing education and workforce development training programs. The Newberry Center provides students with access to student services including financial aid, placement testing, career counseling, registration, and library services.

The Newberry Campus, sited on Wilson Road in the City of Newberry, moved to a renovated state-of-the-art facility that was formerly a Walmart in 1992. From 2016 through 2021, PTC invested more than \$400,000 in capital facilities and equipment in the Newberry Campus. The Newberry campus has emerged as the fastest growing of all PTC campus sites, encompassing 45,000 square feet of classroom, labs, and office space. The facility includes a Community Conference Center that provides a 225-seat auditorium and classrooms available for private and public rental.

7.9.4.3. *Additional Area Higher Education Opportunities*

Newberry's central location and ready access to the Interstate and State highway network enables a feasible commute to higher education facilities in the Columbia area including the University of South Carolina, Benedict College, Allen College, the Lutheran Theological Seminary, Columbia International University, Columbia College, and Midlands Technical College. Lander University in Greenwood and Presbyterian College in Clinton are also located within commuting distance for Newberry County residents.

7.10. Libraries

The *Newberry County Library System* was created through the merger of the Newberry City Library and the Newberry County Library in 1941. The System manages two locations – the main library in the City of Newberry and a branch location in Whitmire. The main facility of the Library System was originally housed in the County Courthouse. It was later moved to the renovated 6,500 square foot, historic post office building at the corner of College and Friend Streets in 1968. In 2009, the main library was moved two blocks away to its present location in the new *Hal Kohn Memorial Library* building at 1100 Friend Street in Newberry. The 22,000 square foot facility includes a South Carolina Room that houses genealogy records, a large children's room, an 80-seat public meeting room, and public computer terminals with internet and wireless access. The Newberry County

Library System holdings include more than 62,200 volumes, with an annual circulation of more than 101,100 (*Libraries.org, 2022*).

The *Whitmire Memorial Library* was originally built in 1950 as a memorial to the veterans of World War I and World War II. The Library, located at 303 Church Street in the Town of Whitmire, underwent extensive renovation in 1976. Computer terminals with internet access are available for public use, as well as wireless internet access.

The *Wessels Library* on the campus of Newberry College houses a print collection of more than 38,000 volumes that includes reference materials and books. The Library also provides online access to electronic resources including e-books, full-text journals, and periodical articles. Participation in the *Partnership Among South Carolina Academic Libraries* (PASCAL) provides access for users to more than one million books. The *Special Collections Room* of the Library houses many historical documents relating to Lutheranism and to the local area.

7.11. Recreation

The provision of quality recreational activities and facilities is vital to the well-being of a community. Parks and recreation facilities are valuable tools in showcasing the natural beauty of a community, preserving open space, attracting visitors, and providing healthy and safe recreational options for residents of all ages.

Although Americans spend most of their waking hours at work, they value their leisure time and have very specific preferences on how to spend it. According to the national *2021 Outdoor Participation Report* developed by the Outdoor Foundation, the most popular outdoor activities are running/jogging, hiking, fishing, cycling, and camping.

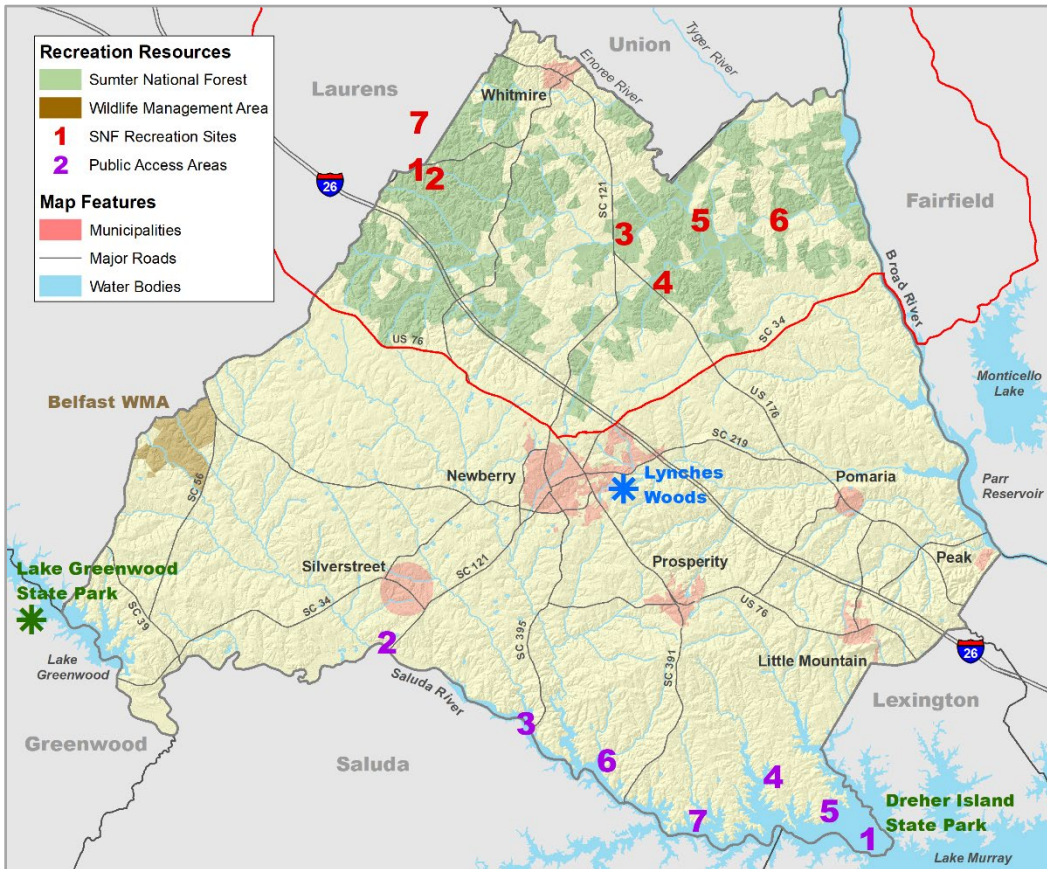
Newberry County residents and visitors are fortunate to have access to numerous and diverse opportunities for passive and active outdoor recreation both within the County and nearby. In addition to the scenic Saluda, Broad, Enoree, and Tyger Rivers that border Newberry County, Lake Murray and Lake Greenwood provide miles of recreational shoreline, with significant portions in Newberry County. Access to fishing and water sports is available at the many public and commercial boat landings. The rural areas of Newberry County are popular with game hunters, with expanses of both privately and publicly managed game land in and adjacent to the Sumter National Forest providing ample populations of dove, quail, deer, and turkey.

7.11.1. Sumter National Forest

Located within the northeastern area of Newberry County are 57,991 acres of the 370,442 acre *Sumter National Forest* – one of only two national forests in South Carolina. The Newberry portion of the Forest is within the 161,216 acre Enoree Ranger District – one of three ranger districts statewide. The District encompasses land throughout Chester, Fairfield, Laurens, Newberry, and Union Counties. The Forest provides a wide range of outdoor activities including paddling or fishing on one of the three rivers that flow through the District. Other activities include camping; bird watching; picnicking; hiking or horseback riding on the 133 miles of trails; hunting and target shooting; and enjoying the beauty of the area including several waterfalls.

Approximately 14% of Newberry County land is federally-owned and managed by the Forest Service for multiple purposes including timber production, recreation, and conservation. Much of the forest is designated as a Wildlife Management Area, allowing hunting under SCDNR regulations. A listing of the major Sumter National Forest recreation resources in the Newberry County area is included in Table 7-15. The location of each resource is numbered in red on Map 7-7.

Map 7-7. Federal, State, and Other Recreation Resources



Sources: Dominion Energy, 2022; USDA Forest Service, 2022; SCDNR, 2022

Table 7-15. Sumter National Forest Recreation Sites in/near Newberry County

MAP LOCATION	FACILITY NAME	FACILITIES
1	Brick House Campground	Year round facility with 21 campsites with tables, grills and lantern holders; 8 extended stay campsites during hunting season; restrooms
2	Buncombe Trail Head	Access to 31.5 mile Buncombe horse trail and the 36 mile Enoree Passage of the Palmetto Trail (14 miles in Newberry County) – shared to Indian Creek; access to Brick House Campground; parking lot
3	Indian Creek Rifle Range	ADA accessible; six shooting tables; backstops placed at 35 and 100-yard intervals; parking lot

MAP LOCATION	FACILITY NAME	FACILITIES
4	Molly's Rock Picnic Area	Self-guided interpretive trail, small stocked pond and fishing pier, picnic shelter and tables, fireplace, restrooms, drinking water, large open area for play
5	Brazelman's Bridge Boat Ramp	Boat ramp access to the Enoree River on S.C. 81 at Brazelman's Bridge; restrooms
6	Keitt's Bridge Boat Ramp	Boat ramp access to the Enoree River on S.C. 45 at Keitt's Bridge; restrooms
7	Enoree Off Highway Vehicle Trail (in Laurens County)	14.4 mile trail for all terrain vehicles and dirt bikes only; parking; loading/unloading ramp; restrooms

Source: USDA Forest Service, Enoree Ranger District, July 2022

7.11.2. State Parks

The 348-acre *Dreher Island State Park*, located near the southern tip of Newberry County, includes three islands and 12 miles of shoreline on Lake Murray (Map 7-7). The park land is leased to the S.C. Department of Parks, Recreation and Tourism (SCPRT) by Dominion Energy. Originally used for training exercises by the Army Air Corps in the 1940s, the State Park is open year-round and includes 12 sheltered picnic areas, three fishing tournament shelters, a community building, three playgrounds, a 0.3-mile nature trail, a 0.3 mile hiking and mountain biking trail, a 2.1-mile hiking trail, three boat ramps, rental boat slips, ten camper cabins, and five lakeside villas. Recreational vehicle and tent camping is accommodated in designated camping sites.

The Park's two lakefront camping areas provide scenic views and easy access to Lake Murray. Recreational vehicles and tents have access to 97 paved camping sites, with an additional 15 sites available for tent camping only. Dreher Island State Park is the only public site on Lake Murray that provides formal camping facilities. Individuals may also camp on islands owned by Dominion Energy and other lands for a maximum of seven consecutive days. These sites include Bundrick Island and River Bend Point in Lexington County and Sunset Road Recreation Area on Hollands Landing Road in Newberry County.

Lake Greenwood State Park is located near the southwestern corner of Newberry County. The 914-acre park encompasses five peninsulas that provide abundant shoreline for lakeside camping, fishing, and boating, and the only public beach access available to Lake Greenwood. Included in the park are a fishing pier, two boat ramps, 125 paved campsites, a 0.8-mile nature trail, four picnic shelters, and a conference center.

7.11.3. Other Recreational Opportunities

Lake Murray is a 50,000 acre man-made lake located on the southeastern border of the County. The lake provides hydro-electric power and recreational opportunities for the Midlands region of South Carolina. Lake Murray is 41 miles long and over 14 miles at its widest point, with more than 500 miles of shoreline. Public marinas dispersed around Lake Murray provide boat ramps and launching facilities, fuel services, groceries, boat sales, boat rentals and/or repairs, bait and tackle, and boat storage. Lake Murray is widely known for its fishing opportunities and hosts a number of local and national fishing tournaments each year. Many of the fishing tournaments are hosted at Dreher Island State Park.

There are numerous public and private access sites on Lake Murray, providing a variety of recreation opportunities including boat launches and slips, wet and dry boat storage, campgrounds, picnic areas, beaches, fishing areas and piers, trails, and playgrounds. Newberry County public access points are listed in Table 7-16. Current and future recreation sites on Lake Murray are numbered in purple on Map 7-7.

Table 7-16. Dominion Public Access Areas – Lake Murray and Saluda River

MAP #	RECREATION SITE	SIZE	SHORELINE	FACILITIES
CURRENT RECREATION SITES				
1	Billy Dreher Island	348.0 acres	12 miles	Camping, boat ramps, walking trails, fishing docks, slips, bait and tackle, gas, restrooms
2	Higgins Bridge	1.1 acres	375 feet	Boat ramp, courtesy dock
3	Kempson Bridge	2.9 acres	600 feet	Boat ramp, courtesy dock
4	Sunset	2.3 acres	640 feet	Fishing dock, courtesy dock, boat ramp, parking
5	Macedonia Church	4.8 acres	2,491 feet	Picnic shelters and tables
FUTURE RECREATION SITES				
6	Big Creek	22.3 acres	2,613 feet	n/a
7	Simpson's Ferry	11.6 acres	3,247 feet	n/a

Source: Dominion Energy, July 2022

Lake Greenwood is an 11,400 acre man-made lake along the southwestern border of Newberry County. Lake Greenwood has a maximum depth of 68.9 feet, and provides 212 miles of scenic shoreline. Several miles of shoreline are within Newberry County. Primary public access is available at Lake Greenwood State Park and at the public fishing access located below the Buzzards Roost Hydro Dam on S.C. Highway 34.

In 1914, the *Broad River* was dammed in order to produce electricity at Parr Shoals. The *Parr Reservoir* is a 4,400 acre man-made lake located on the eastern border of Newberry County. Access to the Broad River and the Parr Reservoir is available at the Heller's Creek and Cannons Creek crossings of Broad River Road, with a boat ramp and picnic area provided at both sites.

In addition to the two lakes, Newberry County is bounded in part by the scenic Saluda, Tyger, and Enoree Rivers. A public boat ramp accessing the *Saluda River* is located at Higgin's Bridge just off Highway 121 south of Silverstreet. The Sumter National Forest maintains two boat ramps with restrooms on the *Enoree River* – one located at Brazelman's Bridge Road and another at Keitt's Bridge on Maybinton Road. Public boat access to the *Tyger River* is provided at Beatty's Bridge and Rose Hill, both in neighboring Union County.

The *Belfast Wildlife Management Area* is a 6,505-acre tract located 10 miles northwest of Newberry on S.C. Highway 56 near the Kinards community (Map 7-7). Although the Belfast WMA is situated on the county line between Newberry and Laurens, much of the land area is within Newberry County. Belfast is owned and managed by the S.C. Department of Natural Resources. The Belfast WMA is open to the public for bird watching, hunting, nature walking, and bicycling and includes an historic plantation that dates back to 1786. An archery range is also available for public use.

7.11.4. Public Parks and Recreation Facilities

There are 46 public parks and recreation facilities encompassing more than 694 acres in Newberry County. The County's recreation resources accommodate a range of outdoor activities such as picnicking and enjoying the outdoors; tracks and trails for walking, jogging or horseback riding; fields for baseball, softball, and soccer; courts for basketball, tennis, volleyball, and horseshoes; as well as golf and disc golf courses. While most park and recreation facilities in Newberry County are owned and managed by municipalities, Lynch's Woods in the City of Newberry is owned and managed by Newberry County. Of particular note is the 128-acre Newberry Recreation Complex in the City of Newberry, completed in 2020, that includes a splash park, a 4.75 acre pond, half-mile nature trail, playground, three baseball/softball fields, two multi-purpose fields, picnic tables, ping pong tables, and outdoor fitness equipment. The County Recreation Department works in partnership with the municipal recreation departments, the YMCA, local high schools, and Newberry College to assist with funding and administration of recreation programs. A listing of the parks and associated resources within the County, including the size and recreational facilities provided at each site, is provided in Table 7-17.

Table 7-17. County and Municipal Parks and Recreation Facilities

RECREATION SITE	SIZE (acres)	PLAY AREA	BALL FIELD	BASKETBALL COURT	TENNIS COURT	VOLLEYBALL COURT	HORSESHOE COURT	MULTI-USE COURT	GOLF OR DISC GOLF	TRACK/TRAIL	PASSIVE PARK	PICNIC SHELTER
Newberry County	266.77											
Lynch's Woods	260									√	√	√
Maybinton Ballpark	6.77		1									
LITTLE MOUNTAIN	6.25											
Reunion Park	9		1									√
Brady Park	1.5											√
Town Center	1											√
Memorial Center	1										√	
South Boundary Street Park	2.75										√	
Little Mountain Elementary	na	√		1								
CITY OF NEWBERRY	225.79											
Astwood Park	0.16	√									√	
Greenway Park and Trail	20.14									√		
JD Rook Field	2		1									
Kendall Park	11.71		2	1								
Margaret Hunter Park	5								disc			√
Marion Davis Park	12.3	√					24					√
Dr. Ulysses S. Gallman Park	15.8	√	1	1						√		√
Memorial Park	1										√	
Mollohon Park	4	√										√

RECREATION SITE	SIZE (acres)	PLAY AREA	BALL FIELD	BASKETBALL COURT	TENNIS COURT	VOLLEYBALL COURT	HORSESHOE COURT	MULTI-USE COURT	GOLF OR DISC GOLF	TRACK/TRAIL	PASSIVE PARK	PICNIC SHELTER
Newberry Recreation Complex	128.14	√	5		1					√		√
Nosegay Park	1										√	
Oakland Park and Tennis Center	4.5	√			9							
Dr. Julian E. Grant Park	2.04	√		4								√
Wells Japanese Garden	0.5										√	
Wells Park	4.08										√	
Willowbrook Park	5.12	√								√		√
Wise Street Park	8.3	√	1	4								
POMARIA	7.0											
Pomaria Ball Park	3		1									
Old Pomaria School	4	√										
Pomaria Garmany Elementary	na	√										
Pomaria Softball	na		1									
PROSPERITY	36.77											
Town Center	18.3	√	2	2								√
Prosperity Dixie Ball Park	8.3		2		2							
Langford Street Ball Park	7		1									
Prosperity Roadside Park	1.17										√	
Rikard School Field	na	√	1									
Prosperity Walking Track	2									√		
SILVERSTREET	na											
Silverstreet Field	na		1	1								
Silverstreet Walking Track	na									√		
WHITMIRE	151.5											
Teddy Weaver Gymnasium	na			1		1						
Whitmire Athletic Complex	8		2									√
Union Street Ballpark	1.5		1									
Whitmire Walking Track	2									√		
Whitmire Golf Course	96	√							golf			√
Whitmire National Armory	na			1								
Whitmire Skate Park	1	√										√
Whitmire Town Park	10	√		2								√
Henry Miller Martin Tennis Courts	na				3							
TOTAL ACRES	694.08											

na - information not available
Source: Newberry County, 2022

Lynch's Woods Park is located in the southeastern corner of the City of Newberry behind Piedmont Technical College on U.S. Highway 76. The 276-acre woodland area officially opened to the public in 1940 and is owned and managed by Newberry County. Park facilities include 7.5 miles of hiking and biking trails, 6.1 miles of equestrian trails, a section of the Palmetto Trail, and picnic tables (Map 7-7). The shady equestrian trail is extremely popular because of its short, steep hills and creek crossings. Mountain bikers are contributing to the Park's increasing popularity. The Park garnered additional recognition with its incorporation into the Palmetto Trail as the *Gateway to the Upstate* in the 1990s and is now welcoming visitors from around the State and beyond.

As one of only 16 cross-state trails in the United States, the *Palmetto Trail* is a federally designated *Millennium Legacy Trail*. The Palmetto Trail is South Carolina's longest pedestrian and bicycle trail, with 27 passages totaling 350 miles through 14 counties completed to date. Passages range from 1.3 miles to 47 miles in length. When completed, the route will extend 500 continuous miles from Oconee County to the Intracoastal Waterway. The trail was established in 1994 to provide free access to trails of all levels of difficulty and varying length. The entire trail is open to hiking and backpacking, with designated passages available for mountain biking, horseback riding, and camping. Four sections of the Palmetto Trail are open in Newberry County.

The *Lynch's Woods Passage*, located in Lynch's Woods Park, is a 4.9-mile trail located in the southeastern area of the City of Newberry behind Piedmont Technical College on U.S. Highway 76. The 260-acre woodland area officially opened to the public in 1940 and is owned by Newberry County and managed by the Newberry County Soil and Water Conservation District. A 4.9 mile scenic trail accommodates hiking, mountain biking, and horseback riding. Park facilities include a sheltered picnic area, restrooms, and two primitive campsites. The Trail provides a connection to the *Newberry Passage* that takes users through downtown Newberry and along the Newberry College campus.

The 10.7-mile *Newberry Passage* travels down Main Street in the City of Newberry, loops around the square, and runs north along College Street and Old Whitmire Highway before tying into the 36-mile *Enoree Passage* in the Sumter National Forest. The Passage is an urban trail that travels through the historic downtown business district in the City of Newberry before transitioning to the wooded Lynch's Woods passage.

The *Peak to Pomaria Passage* is a 10.7 mile trail that extends from the Fairfield County line across the 1,100 foot Broad River trestle to the towns of Pomaria and Peak in Newberry County. Palmetto Conservation purchased the 11-mile, 200-foot wide right-of-way for the Passage from Norfolk South Railroad. Access to the Passage is provided at the Alston Trailhead in Fairfield County and the Pomaria, Hope Station, and Koon Trestle trailheads in Newberry County.

In addition, a fourteen-mile trail section of the *Enoree Passage* of the Palmetto Trail begins at Brickhouse Campground (off of S.C. Highway 66 west of Whitmire) in the Sumter National Forest.

The *Newberry YMCA*, located on Jollystreet Road in the City of Newberry, provides a full range of recreational activities for all ages. The YMCA opened in 1992, with facilities including a heated indoor/outdoor pool, weight room, cardiovascular workout area, steam room, sauna, whirlpool, outdoor field, general purpose room, outdoor walking/jogging track, raised indoor walking/

jogging track, and a childcare room. Programs provided at the YMCA include health and fitness, water aerobics, yoga, spinning (cycling), aquatics, family activities, childcare, soccer, basketball, lacrosse, baseball, softball, volleyball, and a Silver Sneakers fitness program for seniors.

The *Country Club of Newberry* is a semi-private club that allows public play on its 18-hole golf course. The Club is located on County Club Road and also provides practice facilities, a swimming pool, a pro shop, clubhouse, and a bar and grill. The semi-private *Mid Carolina Country Club*, located near Interstate 26 in Prosperity, opened in 1968 and features an 18-hole golf course. Club amenities include two putting greens, a driving range, pool, clubhouse, and restaurant. The nine-hole, public *Whitmire Golf Course* opened in 1933 and is located on Golf Alley Road in Whitmire. Many golf courses are also within driving distance of Newberry County including courses in Chapin, Lexington, and the Columbia area.

7.12. Goals, Objectives and Implementation Strategies

The goals, objectives, and strategies for implementation (GOIS) table summarizes the actions that will be undertaken in the coming decade to achieve the goals and objectives identified in the Community Facilities element. Element goals are broad-based ideals that are intended to guide the future of the community, while an objective is a more specific elaboration of a goal that also provides direction. Together the goals and objectives outline the framework for the element and provide the basis for the more detailed and specific plan strategies. Each supporting implementation strategy includes a listing of the agencies that are accountable for the implementation of the strategy, as well as a time frame for completion.

GOALS/OBJECTIVES/STRATEGIES	ACCOUNTABLE AGENCY	TIMEFRAME
GOAL 7.1. Provide effective, efficient, and responsive delivery of government services		
OBJECTIVE 7.1.1. Provide and maintain adequate administrative facilities		
<i>STRATEGY 7.1.1.1.</i> Update the County Master Space and Facilities Plan to provide a current inventory of County facilities and a plan to accommodate the current and future spatial needs of County departments and programs.	Newberry County	2028
<i>STRATEGY 7.1.1.2.</i> Continue to prioritize capital improvement projects within the County and municipalities to be funded by the one percent sales and use tax and include as referendum questions for public consideration.	Newberry County CPST Commission, Newberry County, Municipalities	Ongoing
OBJECTIVE 7.1.2. Plan the location and development of community facilities to accommodate present and future needs		
<i>STRATEGY 7.1.2.1.</i> Maintain a current, accurate, and robust geographic information mapping system as a management and planning tool.	Newberry County	Ongoing
<i>STRATEGY 7.1.2.2.</i> Explore and pursue infrastructure cost-sharing opportunities with developers and encourage development where services are already available.	Newberry County, Private Developers, Utilities providers	Ongoing

GOALS/OBJECTIVES/STRATEGIES	ACCOUNTABLE AGENCY	TIMEFRAME
STRATEGY 7.1.2.3. Explore the use of funding sources such as impact fees to fund new or expanded facilities to accommodate growth.	Newberry County	2028
OBJECTIVE 7.1.3. Implement the goals, objectives, and implementation strategies of the Comprehensive Plan		
STRATEGY 7.1.3.1. Determine staff, facility and resource needs, and partnerships to implement the Comprehensive Plan.	Newberry County, Municipalities, Partner Agencies and Entities	Ongoing
STRATEGY 7.1.3.2. Conduct a five-year review and update of the Comprehensive Plan to ensure relevance and timeliness.	Newberry County, Municipalities	2028
STRATEGY 7.1.3.3. Prepare a new County Comprehensive Plan every ten years per State law.	Newberry County, Municipalities	2033
OBJECTIVE 7.1.4. Strengthen coordination among the County, municipalities, neighboring counties, State agencies, and other public and private organizations		
STRATEGY 7.1.4.1. Continue coordination with municipalities, neighboring counties, and the State on matters relating to public safety including fire and police service, homeland security, and emergency preparedness.	Newberry County, Municipalities Newberry County Memorial Hospital, State Agencies	Ongoing
STRATEGY 7.1.4.2. Continue regional coordination through CMCOG, CMRTA, municipalities, neighboring counties, Newberry County Council on Aging, and other public and private agencies in matters related to transportation and transit.	Newberry County, Municipalities, CMCOG, CMRTA, NCCOA	Ongoing
STRATEGY 7.1.4.3. Continue coordination of the provision of water, sewer, and electricity with the NCWSA, municipalities, and other public and private providers.	Newberry County, NCWSA, Municipal and Private Utility Providers	Ongoing
STRATEGY 7.1.4.4. Continue to provide comprehensive planning and building code and zoning review and enforcement for participating municipalities.	Newberry County, Participating Municipalities	Ongoing
STRATEGY 7.1.4.5. Coordinate with municipalities and community organizations to effectively communicate the location and availability of services, facilities, and events and to provide important information.	Newberry County, Municipalities, Agencies, Public and Private Organizations	Ongoing
GOAL 7.2. Ensure the provision of adequate, safe, and efficient utilities and services within the County		
OBJECTIVE 7.2.1. Support water and sewer providers in the maintenance, update, and expansion of infrastructure and facilities to serve the present and future residential, commercial, public facilities, and industrial needs of the County		
STRATEGY 7.2.1.1. Support efforts by the water service and wastewater collection and treatment providers to rehabilitate and replace aging water and sewer infrastructure and facilities.	Newberry County, Municipalities NCWSA, Municipal Providers	Ongoing
STRATEGY 7.2.1.2. Support water and sewer providers in the extension of water and sewer service to currently unserved or underserved areas.	Newberry County, Municipalities NCWSA, Municipal Providers	Ongoing

GOALS/OBJECTIVES/STRATEGIES	ACCOUNTABLE AGENCY	TIMEFRAME
<i>STRATEGY 7.2.1.3.</i> Support water and sewer providers in the expansion and upgrade of existing water and wastewater facilities to accommodate the extension of water and sewer service.	Newberry County, Municipalities NCWSA, Municipal Providers	Ongoing
GOAL 7.3. Protect lives and property through stormwater and flood plain management		
OBJECTIVE 7.3.1. Provide effective stormwater and flood plain management		
<i>STRATEGY 7.3.1.1.</i> Review impervious surface requirements in developments and substantial redevelopments to minimize stormwater runoff.	Newberry County	2028
<i>STRATEGY 7.3.1.2.</i> Explore stormwater retention requirements for new developments and substantial redevelopments, both public and private.	Newberry County	2028
<i>STRATEGY 7.3.1.3.</i> Continue to regulate land-disturbance activities to control erosion and sedimentation.	Newberry County	Ongoing
<i>STRATEGY 7.3.1.4.</i> Continue participation in the National Flood Insurance Program and administration of the flood plain management program in compliance with Federal and State regulations	Newberry County	Ongoing
<i>STRATEGY 7.3.1.5.</i> Periodically review flood plain regulations and procedures to ensure protection per FEMA requirements and to evaluate conditions that may require more stringent standards.	Newberry County	Biannually
GOAL 7.4. Ensure the efficient, safe, and cost-effective removal and disposal of solid waste		
OBJECTIVE 7.4.1. Plan for and provide solid waste removal and disposal services to meet the current and future needs of the County's businesses and residences		
<i>STRATEGY 7.4.1.1.</i> Continue to provide efficient and cost-effective collection of solid waste at centers located throughout the County.	Newberry County	Ongoing
GOAL 7.5. Protect the health, safety, and welfare of residents and visitors through responsive, adequately equipped, and well-trained and staffed public safety services		
OBJECTIVE 7.5.1. Reduce vulnerability and exposure of the public to catastrophic events and effectively implement assistance and recover operations in the event of man-made or natural disasters or emergencies		
<i>STRATEGY 7.5.1.1.</i> Continue coordination among the County, municipalities, neighboring counties, and State and Federal agencies on procedures and programs related to disaster preparedness and emergency operations.	Newberry County, Newberry County Memorial Hospital, Municipalities, Neighboring Counties, State and Federal Agencies, Other Relevant Local Agencies	Ongoing
<i>STRATEGY 7.5.1.2.</i> Continue regular updates to the County Emergency Operations Plan.	Newberry County, Newberry County Memorial Hospital, Other Relevant Local Agencies	Ongoing
<i>STRATEGY 7.5.1.3.</i> Continue participation in the development of updates to the Central Midlands Hazard Mitigation Plan.	Newberry County, Municipalities, CMCOG	Ongoing

GOALS/OBJECTIVES/STRATEGIES	ACCOUNTABLE AGENCY	TIMEFRAME
OBJECTIVE 7.5.2. Provide timely and prepared response to fire and police emergencies		
STRATEGY 7.5.2.1. Continue to provide dispatching for all public safety calls in Newberry County through the Sheriff's Department.	Newberry County, Sheriff	Ongoing
STRATEGY 7.5.2.2. Continue to support the volunteer fire departments and the City of Newberry in their provision of staffing and equipment levels needed for timely response to fire emergencies in Newberry County.	Newberry County, City of Newberry, Board of Rural Fire Control, Volunteer Fire Departments	Ongoing
STRATEGY 7.5.2.3. Support the Board of Rural Fire Control, volunteer fire departments, and the City of Newberry in their efforts to plan for future service and facility expansions to accommodate population growth and business/commercial development.	Newberry County, City of Newberry, Board of Rural Fire Control, Volunteer Fire Departments	Ongoing
STRATEGY 7.5.2.4. Continue to support the Board of Rural Fire Control, volunteer fire departments, and the City of Newberry as they seek ways to improve fire service and consider the cost-benefit of further lowering the ISO rating for properties in Newberry County.	Newberry County, City of Newberry, Board of Rural Fire Control, Volunteer Fire Departments	Ongoing
STRATEGY 7.5.2.5. Explore the feasibility of increasing the number of paid fire service staff.	Newberry County, Board of Rural Fire Control	2024
STRATEGY 7.5.2.6. Continue to provide adequate staffing and equipment levels needed for timely response to police emergencies.	Newberry County, Municipalities	Ongoing
STRATEGY 7.5.2.7. Plan for future service and facility expansions for the Sheriff's Department and municipal police departments to accommodate population growth and business/commercial development.	Newberry County, Municipalities	Ongoing
STRATEGY 7.5.2.8. Continue to make prevention of crime and fire emergencies a priority through programs aimed at preventing juvenile delinquency, public education, and crime prevention programs such as Neighborhood Watch.	Sheriff, Municipal Police Departments, SDNC, Faith-based Organizations, Neighborhood Associations, Civic Groups, State and Federal Agencies	Ongoing
GOAL 7.6. Foster a climate of community wellness through support for quality, accessible health services for all residents		
OBJECTIVE 7.6.1. Provide timely, effective, and skilled response to medical emergencies in the County		
STRATEGY 7.6.1.1. Continue to support the Newberry County EMS in the provision of timely, effective, and skilled EMS service.	Newberry County, Newberry County EMS, Newberry County Memorial Hospital, Board of Rural Rescue Squads	Ongoing
STRATEGY 7.6.1.2. Support the County EMS in their efforts to plan for future service and facility expansions to accommodate population growth and business/commercial development.	Newberry County, Newberry County EMS, Newberry County Memorial Hospital, Board of Rural Rescue Squads	Ongoing

GOALS/OBJECTIVES/STRATEGIES	ACCOUNTABLE AGENCY	TIMEFRAME
OBJECTIVE 7.6.2. Ensure access to quality and affordable health care for all residents		
STRATEGY 7.6.2.1. Continue to support the Newberry County Memorial Hospital in the provision of quality health care for area residents.	Newberry County Memorial Hospital, Newberry County, Municipalities	Ongoing
STRATEGY 7.6.2.2. Support the Hospital and other health care providers in the expansion of facilities and addition of services to meet the growing needs of area residents.	Newberry County Memorial Hospital, Newberry County, Municipalities, State Agencies	Ongoing
STRATEGY 7.6.2.3. Promote the prevention of chronic health problems through the continued operation of the Free Medical Clinic of Newberry County to serve the community's indigent population.	Free Medical Clinic of Newberry County, Newberry County, Municipalities, Health Care Providers	Ongoing
STRATEGY 7.6.2.4. Support workforce development efforts to increase the number of Newberry residents who pursue advanced training and employment in the high-demand health care sector to help meet critical workforce shortages.	Upper Savannah WIA, Higher Education, Newberry County, City of Newberry	Ongoing
GOAL 7.7. Support the provision of quality, accessible, and effective social services and support systems to persons in need		
OBJECTIVE 7.7.1. Support State, County, municipal, and other social service providers in identifying and meeting the support needs of residents, including local special populations		
STRATEGY 7.7.1.1. Support the provision of adequate facilities by agencies serving the social service needs of County residents.	Newberry County, Municipalities, State and Local Agencies	Ongoing
STRATEGY 7.7.1.2. Support actions by State agencies to maintain and enhance social services provided to residents of the County.	Newberry County, Municipalities, State and Local Agencies	Ongoing
STRATEGY 7.7.1.3. Continue to support agencies in the provision of needed services for elderly County residents.	Newberry County, Municipalities, NCCOA, Public and Private Organizations	Ongoing
STRATEGY 7.7.1.4. Encourage the continued involvement of area faith-based organizations in providing services and outreach to those in need.	Newberry County, Municipalities, Faith-Based Organizations	Ongoing
GOAL 7.8. Ensure access to quality, lifelong educational opportunities for all residents		
OBJECTIVE 7.8.1. Promote coordination among local government and service providers with the PK-12 school system and higher education to ensure adequate facilities and planning for future growth and needs		
STRATEGY 7.8.1.1. Strengthen coordination with the School District on the location of new schools and expansion of existing facilities.	Newberry County, Municipalities, SDNC	Ongoing
STRATEGY 7.8.1.2. Support School District efforts to pursue additional funding to improve instruction through improvements in facilities, teacher recruitment, community involvement, curriculum enhancement, and the integration of instructional technology.	Newberry County, Municipalities, SDNC, Chamber of Commerce, Employers	Ongoing

GOALS/OBJECTIVES/STRATEGIES	ACCOUNTABLE AGENCY	TIMEFRAME
STRATEGY 7.8.1.3. Coordinate with local postsecondary institutions to assist in determining appropriate sites for future campus and facility expansions in the strategic and master planning processes.	Newberry County, Newberry College, Piedmont Technical College	Ongoing
STRATEGY 7.8.1.4. Support literacy and workforce training providers that improve the job and life skills of County residents.	Newberry County, Municipalities, Piedmont Technical College, SDNC	Ongoing
STRATEGY 7.8.1.5. Work with the School District to determine the impacts of residential development on school capacity and resources and explore solutions to accommodating future growth.	Newberry County, SDNC	Ongoing
GOAL 7.9. Support the provision of adequate and accessible library resources for all residents		
OBJECTIVE 7.9.1. Promote the maintenance, upgrade, and expansion of the Newberry County Library system		
STRATEGY 7.9.1.1. Support the Newberry County Library System in the provision of quality programs and materials.	Newberry County, Municipalities, Newberry County Library System, S.C. State Library	Ongoing
STRATEGY 7.9.1.2. Support and coordinate with the Newberry County Library System in the planning of future facilities to serve the County residents.	Newberry County, Municipalities, Newberry County Library System, S.C. State Library	Ongoing